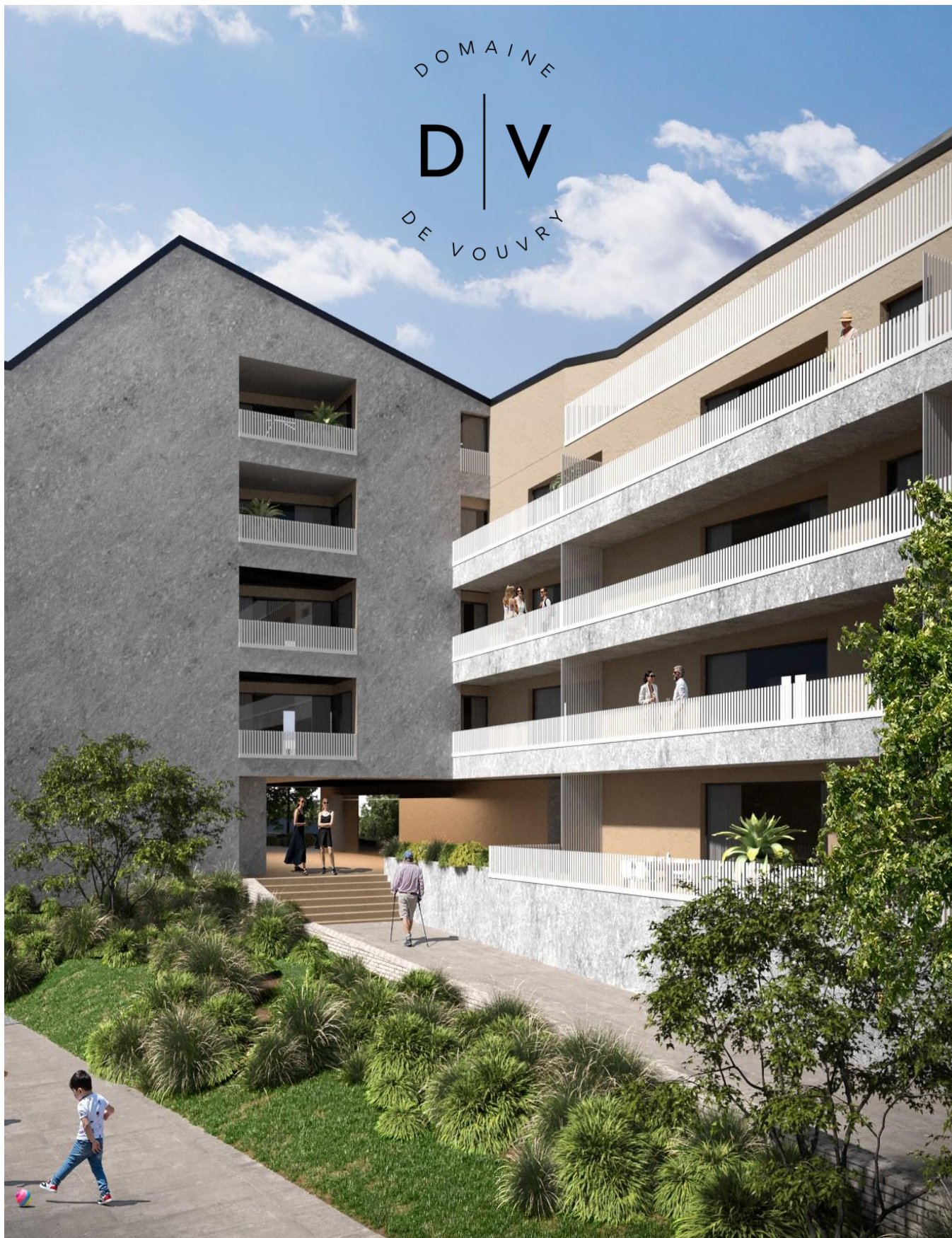


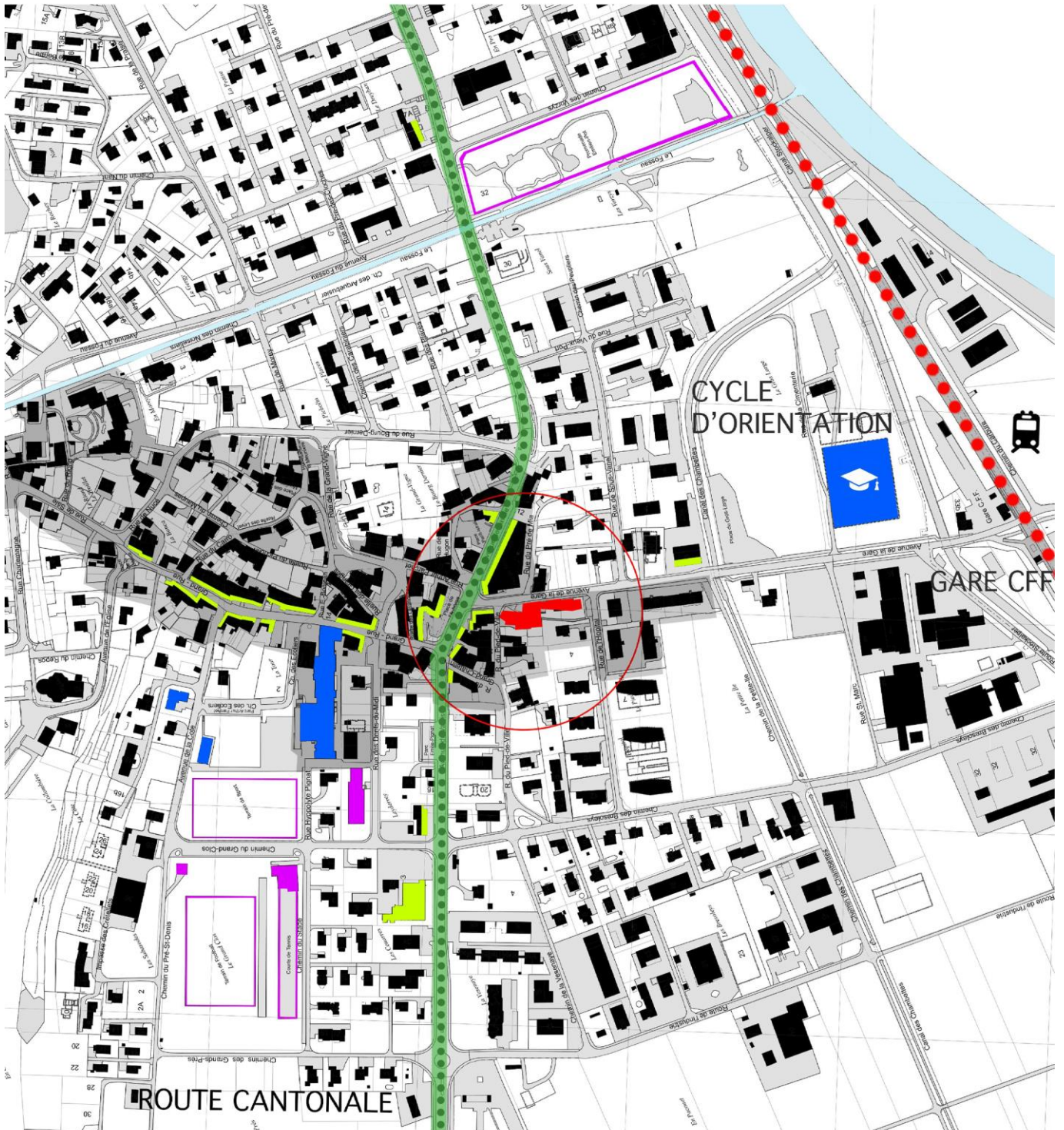
DOMAINE
D | V
DE VOUVRY



AU COEUR DE VOUVRY

- 37 APPARTEMENTS BÂTIMENT A
- EXPOSITION PLEIN SUD
- DE 68 À 150 M² AVEC BALCONS, TERRASSES OU JARDINS


COMPTOIR IMMOBILIER
RÉGISSEURS DEPUIS 1825



- Domaine de Vouvry
- Equipements commerciaux
- Equipements sportifs
- Equipements scolaires





APPARTEMENT A01

Nombre de pièces : 2.5 pièces

Surface nette : 58.50 m²

Surface brute : 64.35 m²

Balcon - terrasse : 30.60

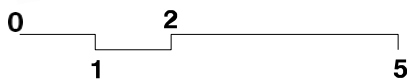
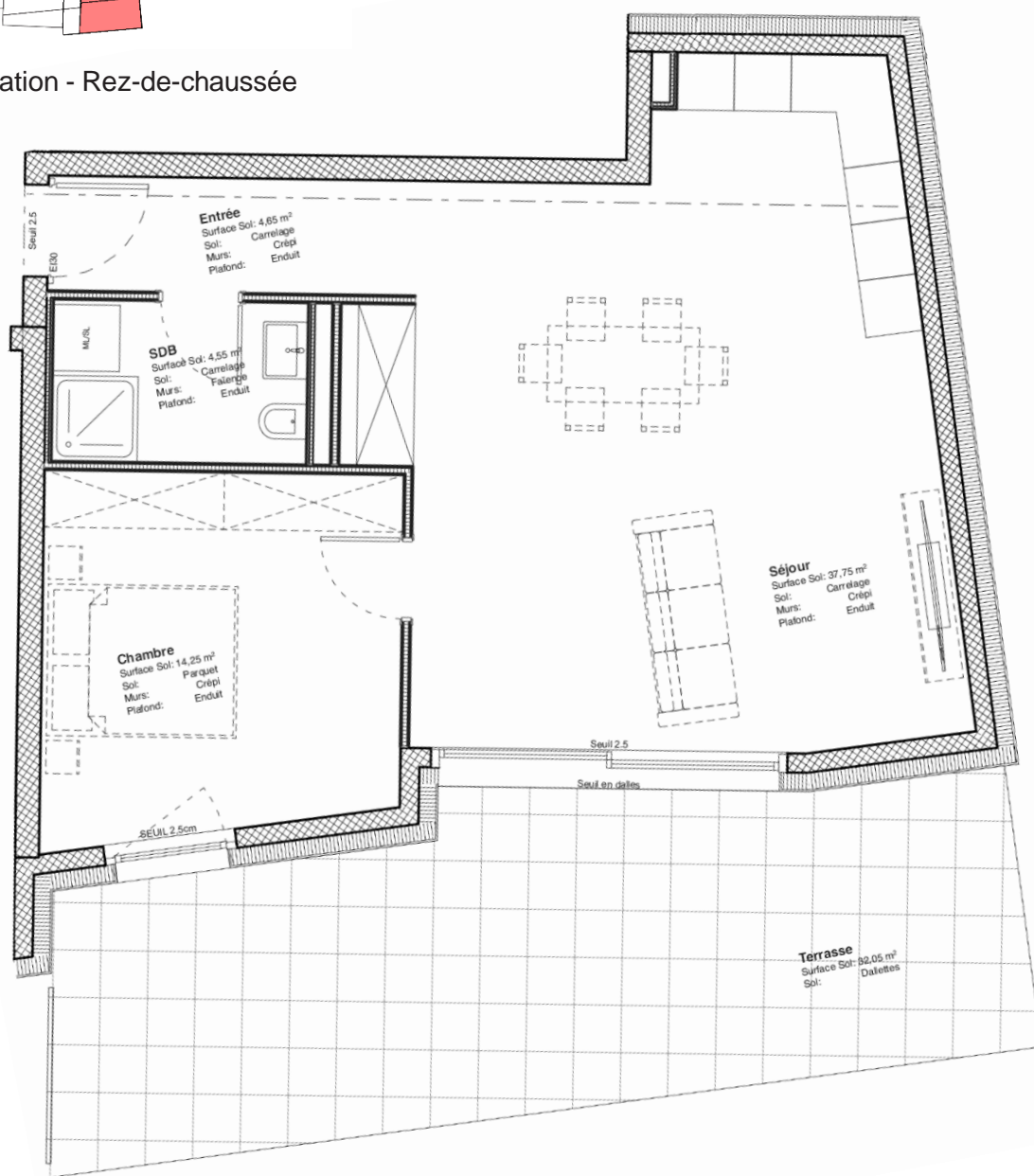
Surface pondérée : 74.45 m²

(SB + 1/3 terrasse)

VENDU



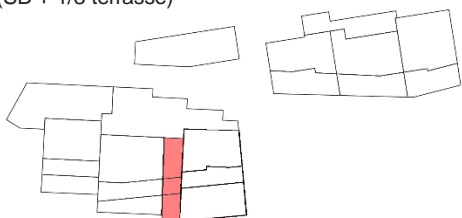
Localisation - Rez-de-chaussée



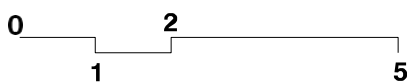
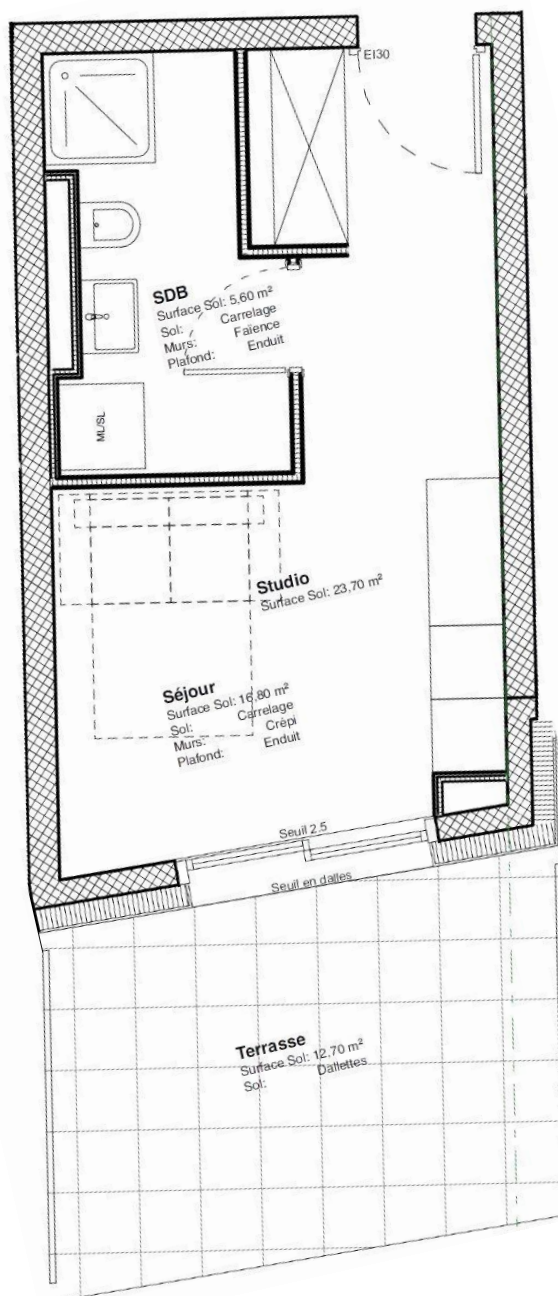
APPARTEMENT A02

Nombre de pièces : Studio
 Surface nette : 23.70 m²
 Surface brute : 26.05 m²
 Balcon - terrasse : 12.70 m²
 Surface pondérée : 30.25 m²

(SB + 1/3 terrasse)



Localisation - Rez-de-chaussée



APPARTEMENT A03

Nombre de pièces : 3.5 pièces

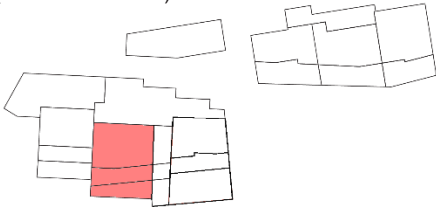
Surface nette : 77.00 m²

Surface brute : 84.70 m²

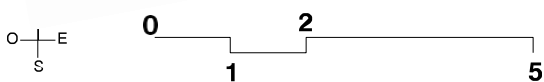
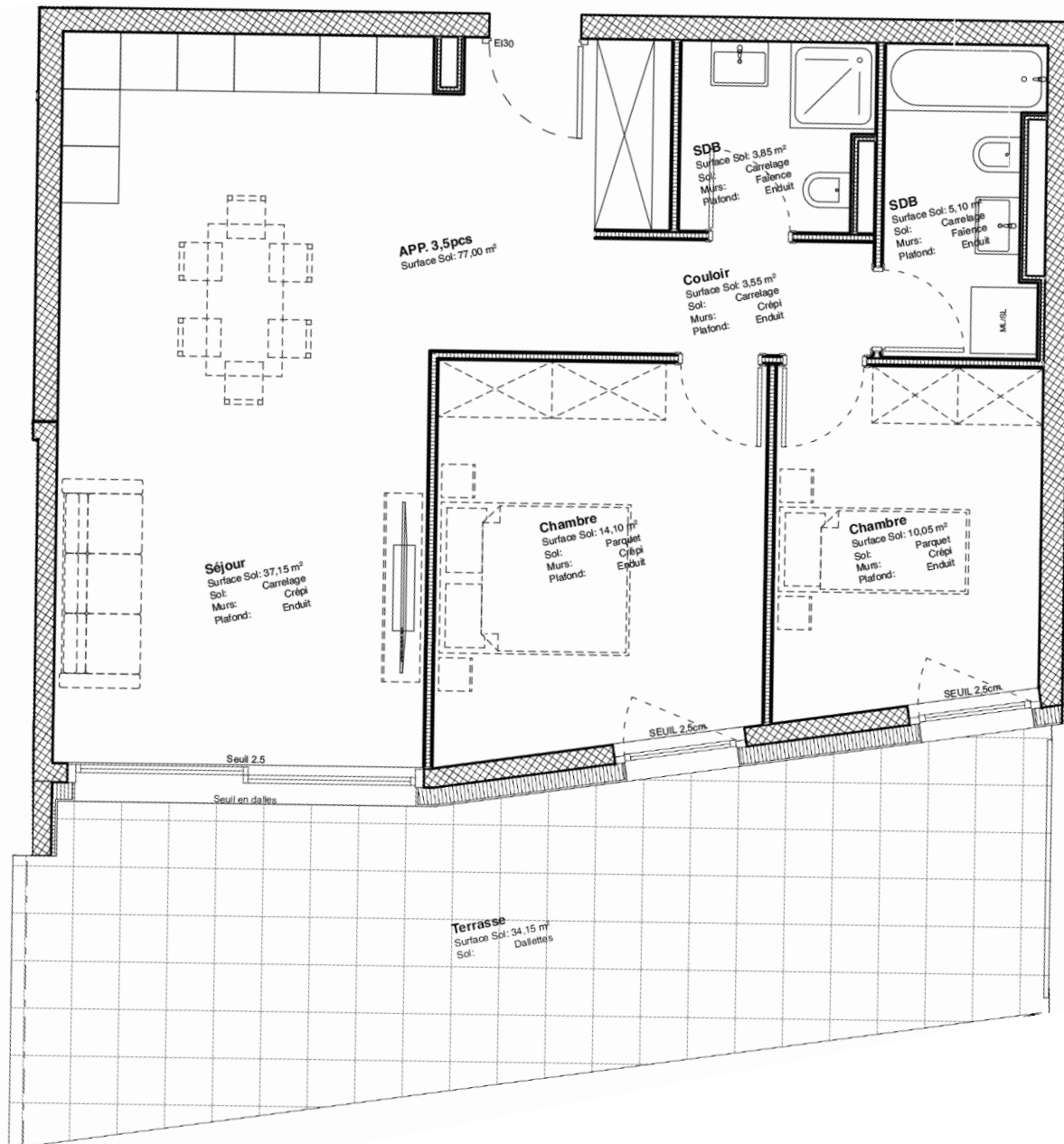
Balcon - terrasse : 34.15 m²

Surface pondérée : 95.95 m²

(SB + 1/3 terrasse)



Localisation - Rez-de-chaussée



APPARTEMENT A04

Nombre de pièces : 2.5 pièces

Surface nette : 62.40 m²

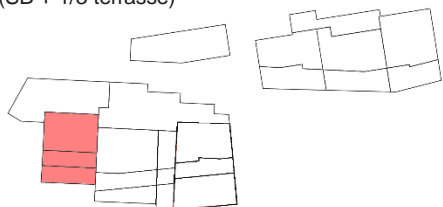
Surface brute : 68.65 m²

Balcon - terrasse : 29.60 m²

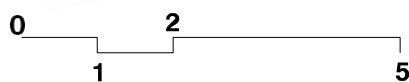
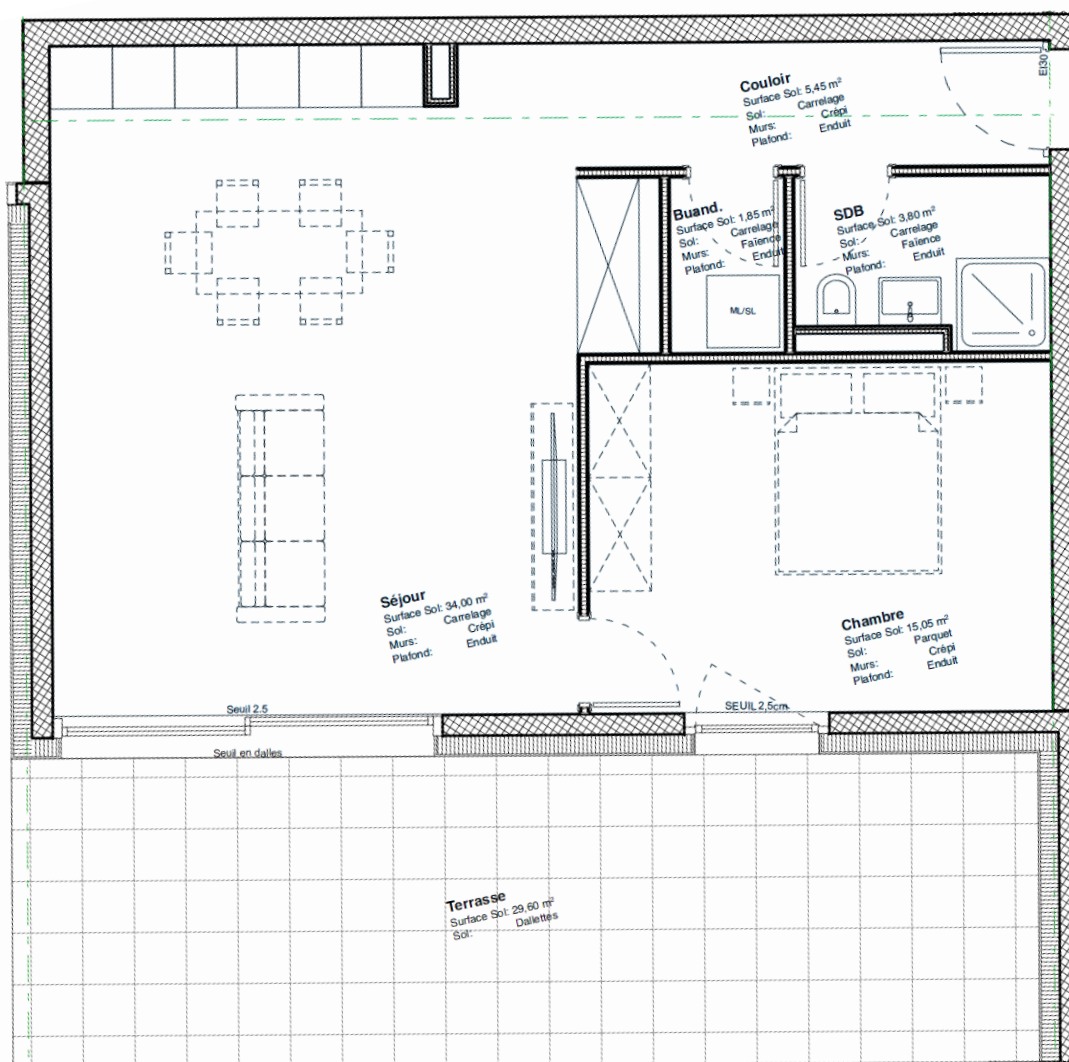
Surface pondérée : 78.40 m²

(SB + 1/3 terrasse)

VENDU



Localisation - Rez-de-chaussée



APPARTEMENT A10

Nombre de pièces : 3.5 pièces

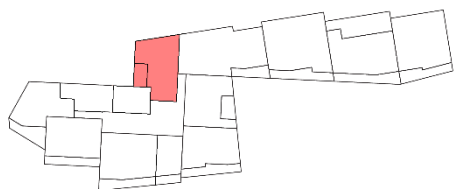
Surface nette : 61.50 m²

Surface brute : 67.65 m²

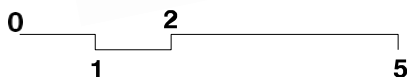
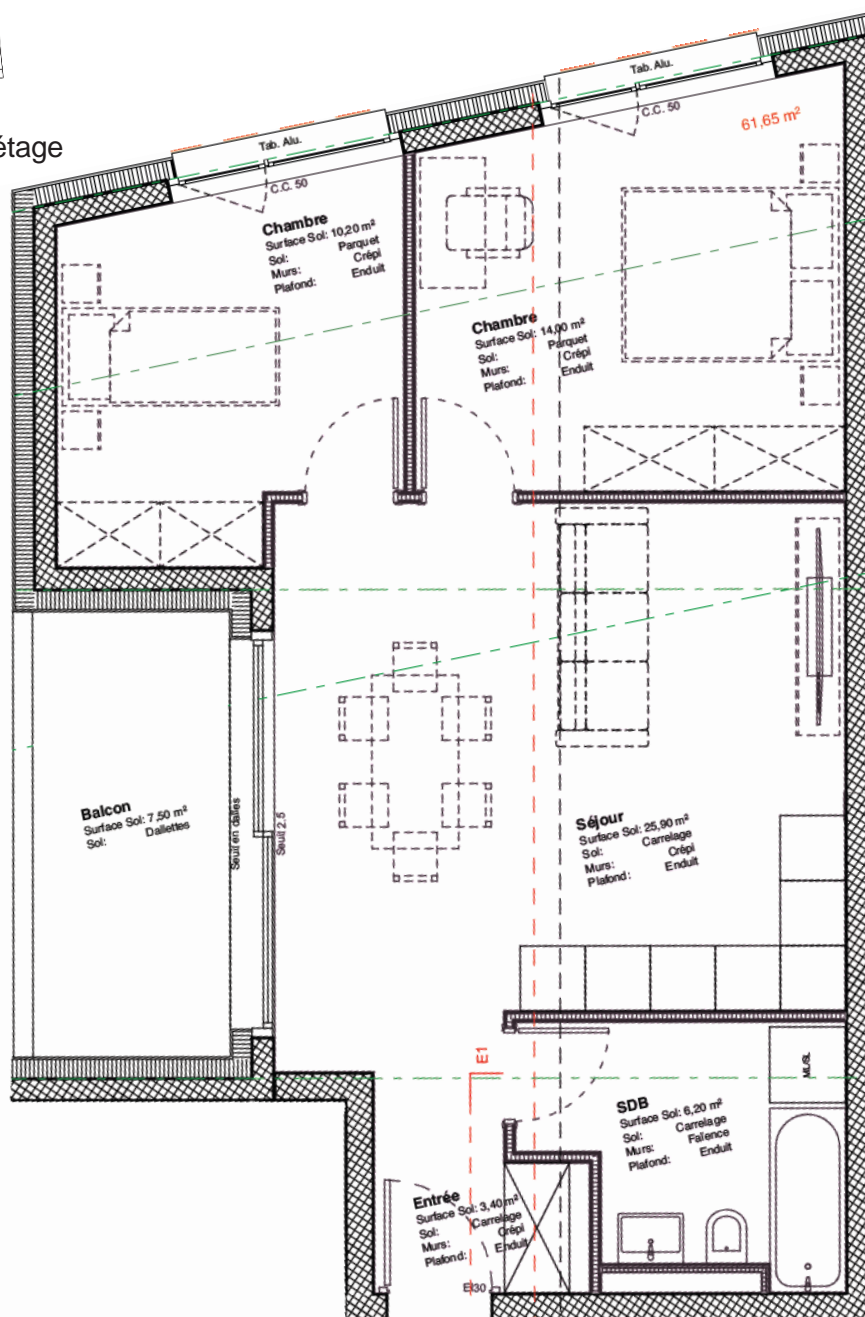
Balcon - terrasse : 7.50 m²

Surface pondérée : 71.40 m²

(SB + 1/2 Balcon)



Localisation - 1er étage



APPARTEMENT A11

Nombre de pièces : 4.5 pièces

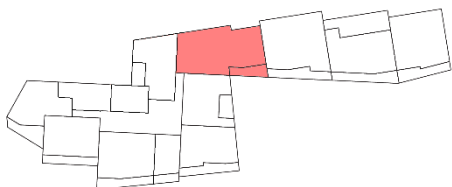
Surface nette : 106.55 m²

Surface brute : 117.15 m²

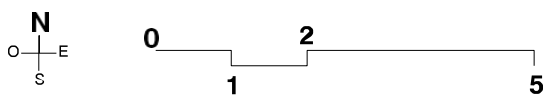
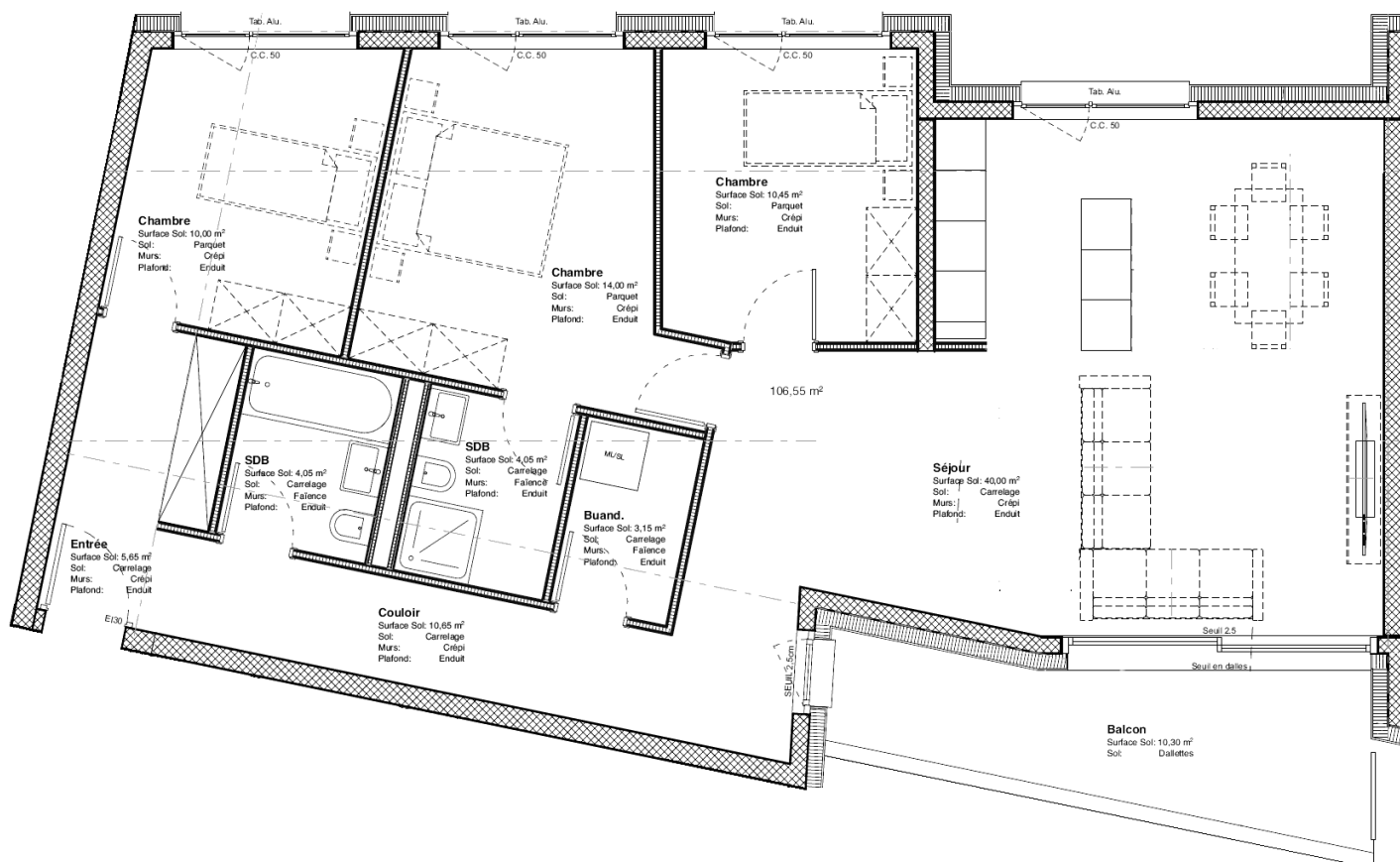
Balcon - terrasse : 10.30 m²

Surface pondérée : 122.30 m²

(SB + 1/2 balcon)



Localisation - 1er étage



APPARTEMENT A12

Nombre de pièces : 2.5 pièces

Surface nette : 61.15 m²

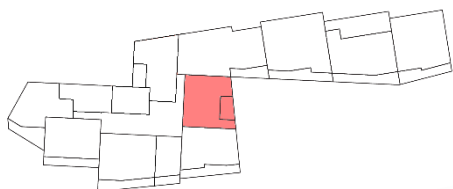
Surface brute : 67.20 m²

Balcon - terrasse : 8.20 m²

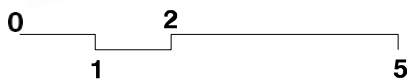
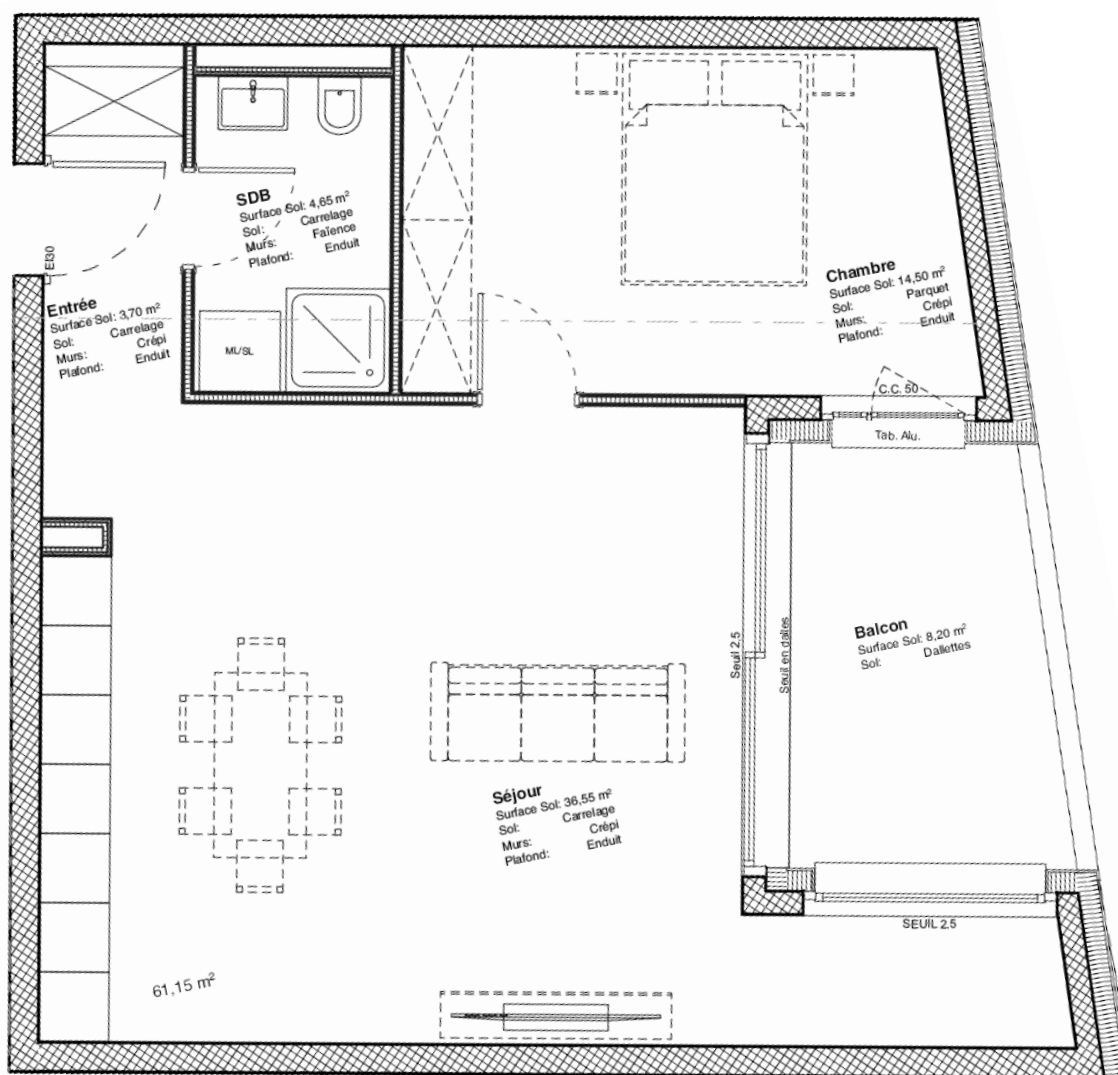
Surface pondérée : 71.30 m²

(SB + 1/2 balcon)

VENDU



Localisation - 1er étage



APPARTEMENT A13

Nombre de pièces : 2.5 pièces

Surface nette : 59.55 m²

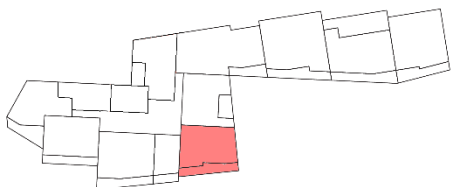
Surface brute : 66.50 m²

Balcon - terrasse : 14.60 m²

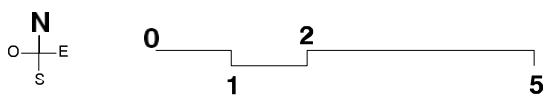
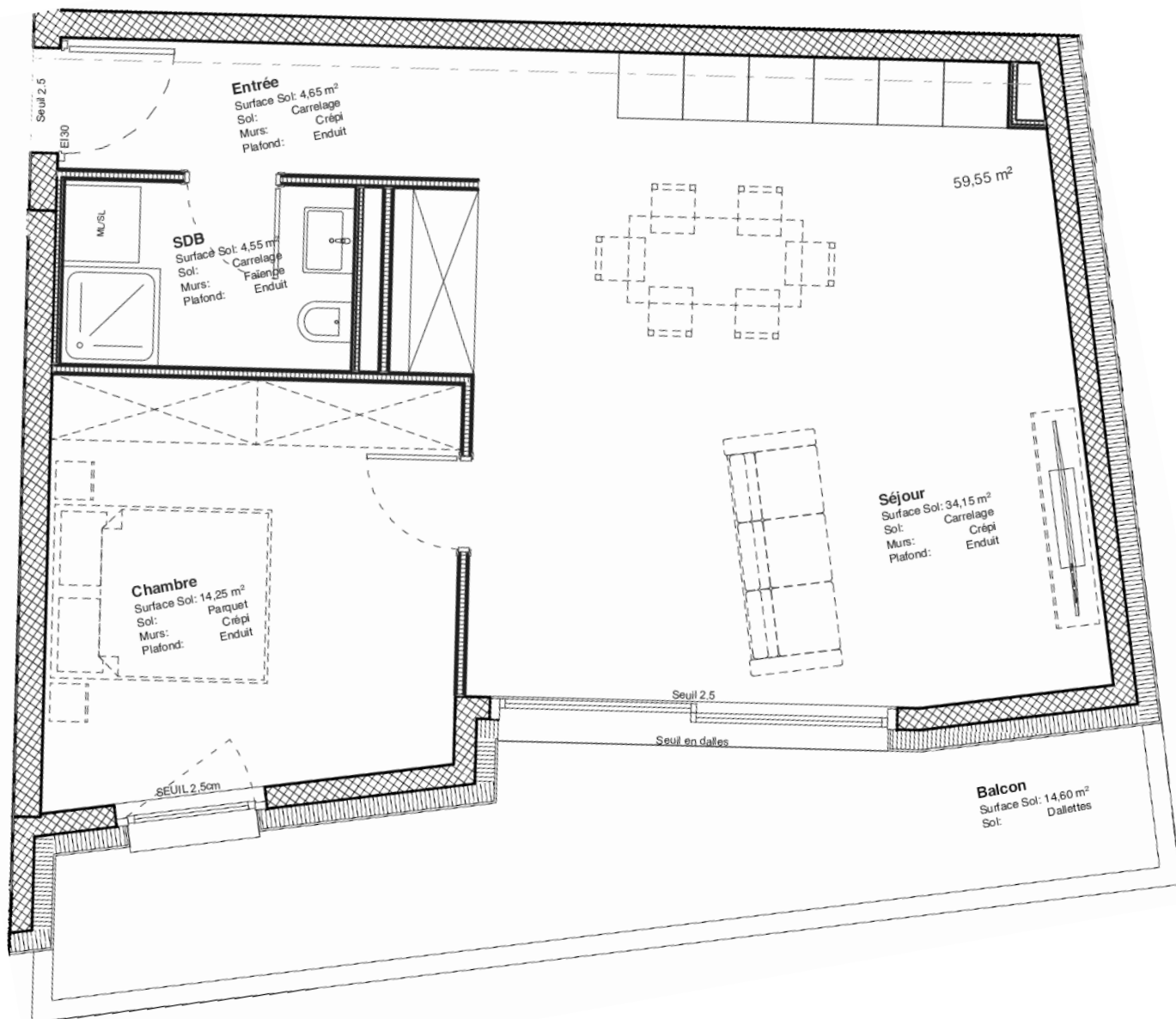
Surface pondérée : 73.80 m²

(SB + 1/2 balcon)

VENDU



Localisation - 1er étage

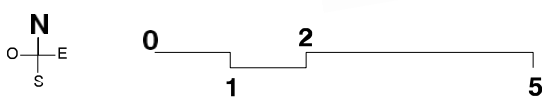
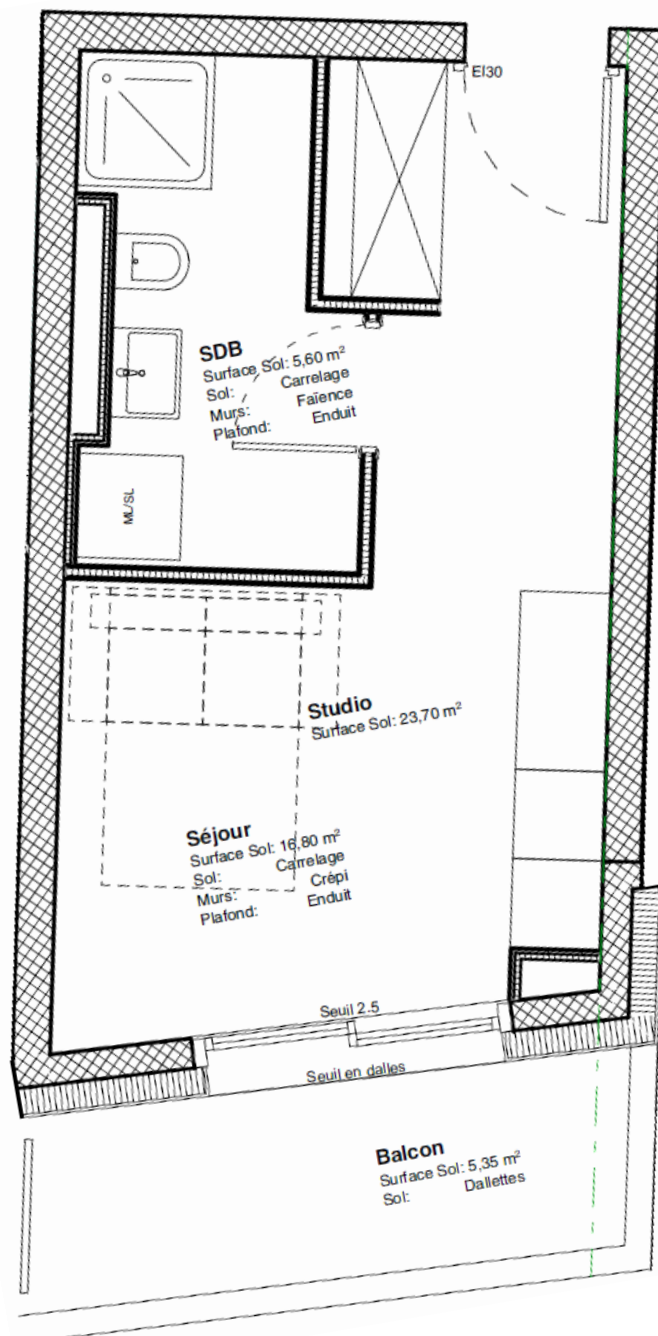


APPARTEMENT A14

Nombre de pièces : Studio
 Surface nette : 23.70 m²
 Surface brute : 26.05 m²
 Balcon - terrasse : 5.35 m²
 Surface pondérée : 28.70 m²
 (SB + 1/2 balcon)



Localisation - 1er étage



APPARTEMENT A15

Nombre de pièces : 3.5 pièces

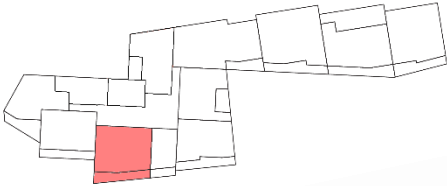
Surface nette : 77.00 m²

Surface brute : 84.70 m²

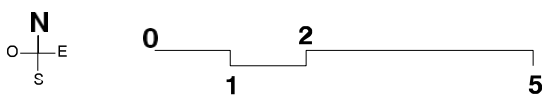
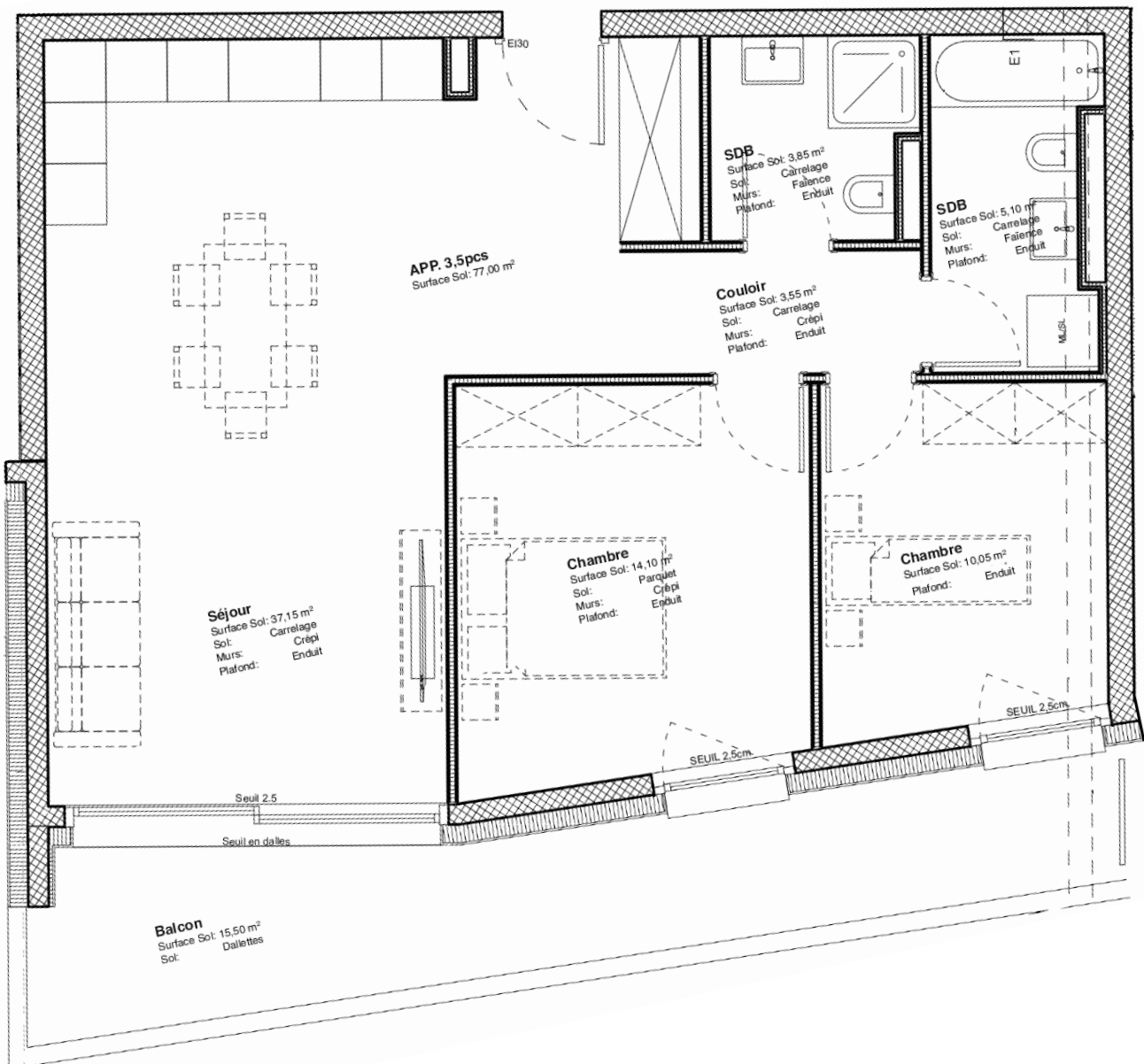
Balcon - terrasse : 15.50 m²

Surface pondérée : 92.45 m²

(SB + 1/2 balcon)



Localisation - 1er étage



APPARTEMENT A16

Nombre de pièces : 2.5 pièces

Surface nette : 62.40 m²

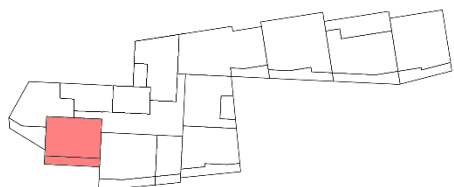
Surface brute : 68.65 m²

Balcon - terrasse : 12.85 m²

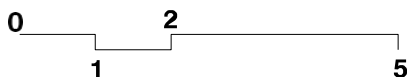
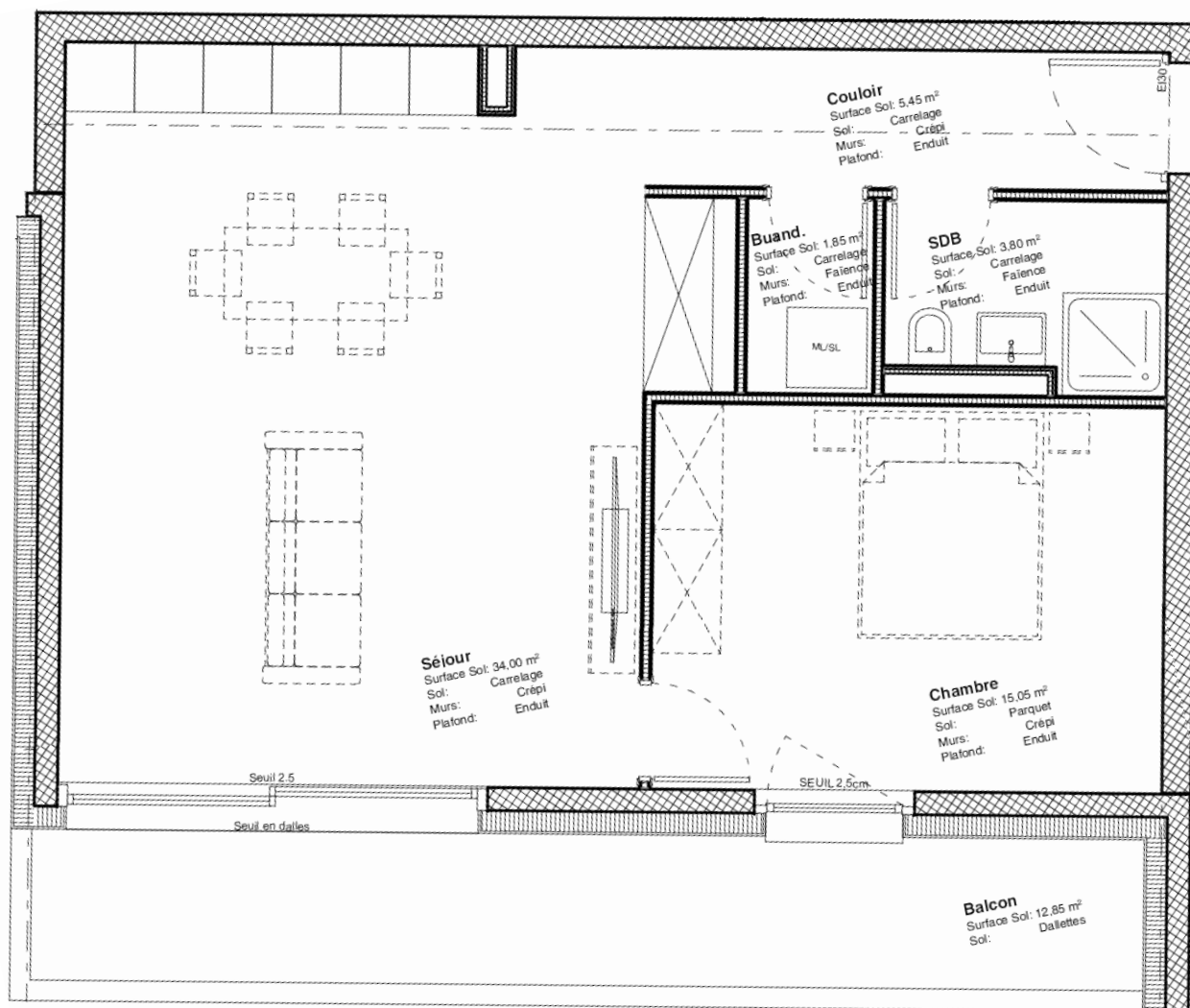
Surface pondérée : 75.05 m²

(SB + 1/2 balcon)

VENDU



Localisation - 1er étage



APPARTEMENT A17

Nombre de pièces : 2.5 pièces

Surface nette : 61.10 m²

Surface brute : 67.20.m²

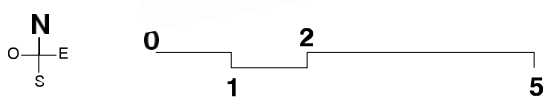
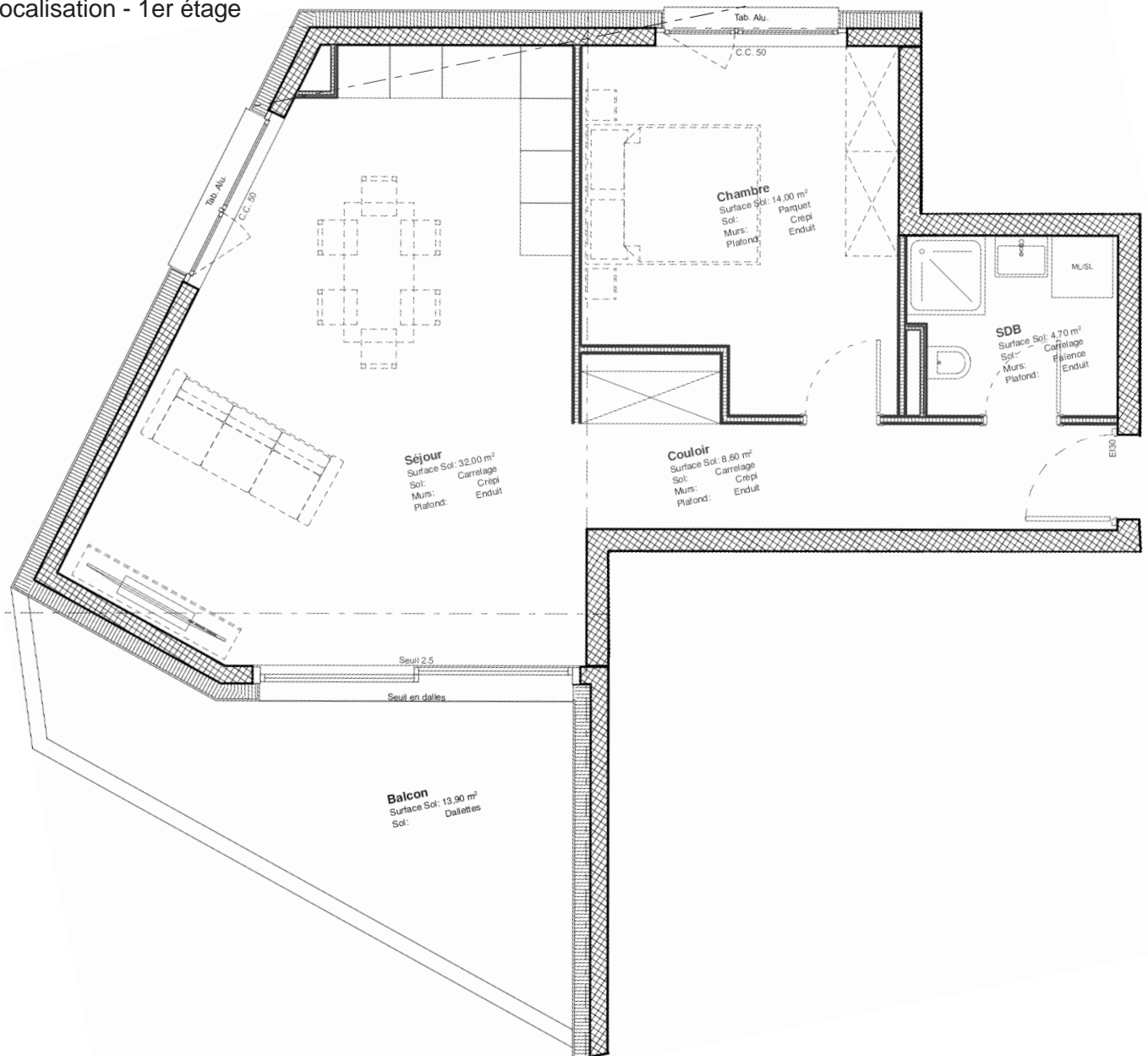
Balcon - terrasse : 13.90 m²

Surface pondérée : 74.15 m²

(SB + 1/2 balcon)



Localisation - 1er étage



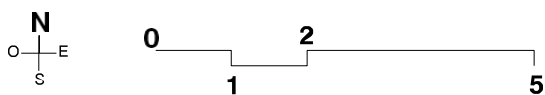
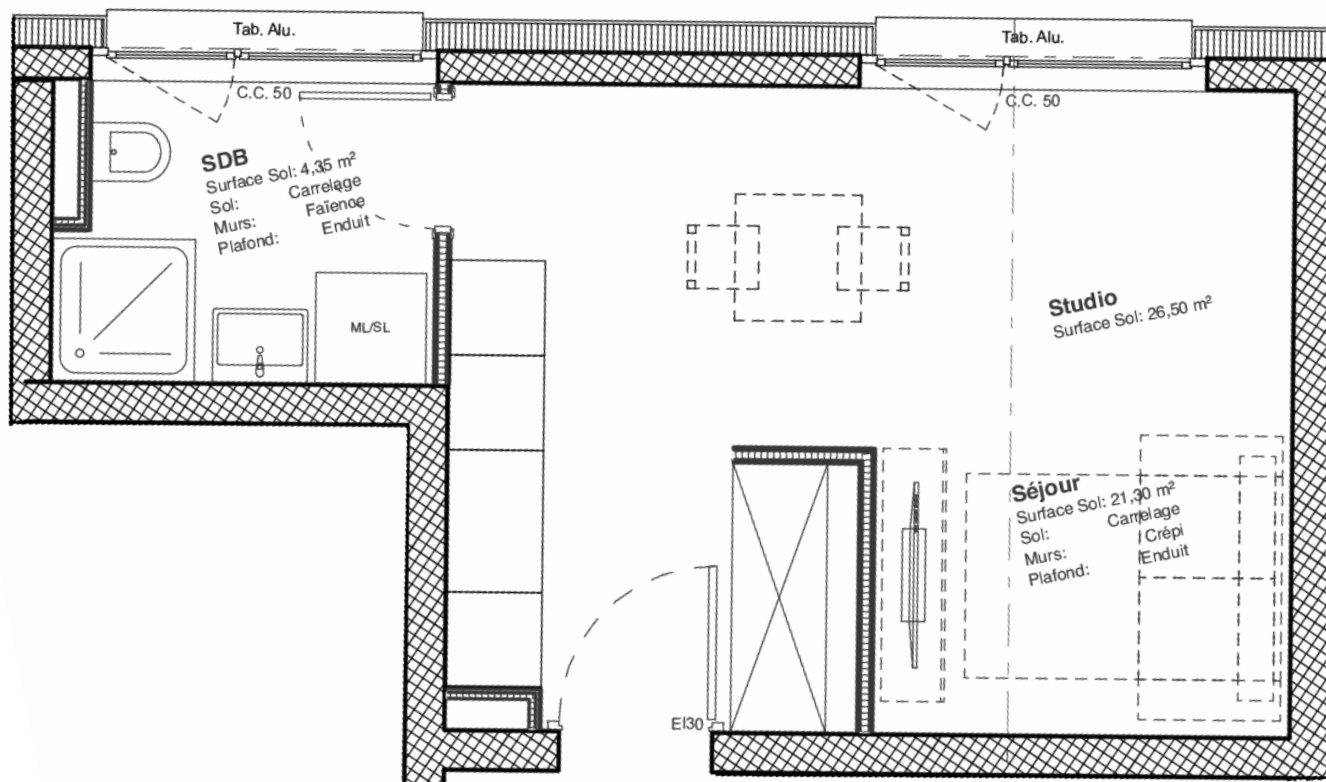
APPARTEMENT A18

Nombre de pièces : Studio
 Surface nette : 26.50 m²
 Surface brute : 29.15 m²
 Balcon - terrasse : 0.00 m²
 Surface pondérée : 29.15 m²

(SB + 1/2 balcon)



Localisation - 1er étage



APPARTEMENT A19

Nombre de pièces : Studio

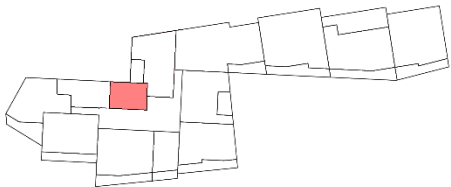
Surface nette : 26.30 m²

Surface brute : 28.90 m²

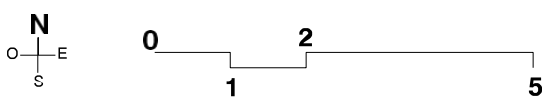
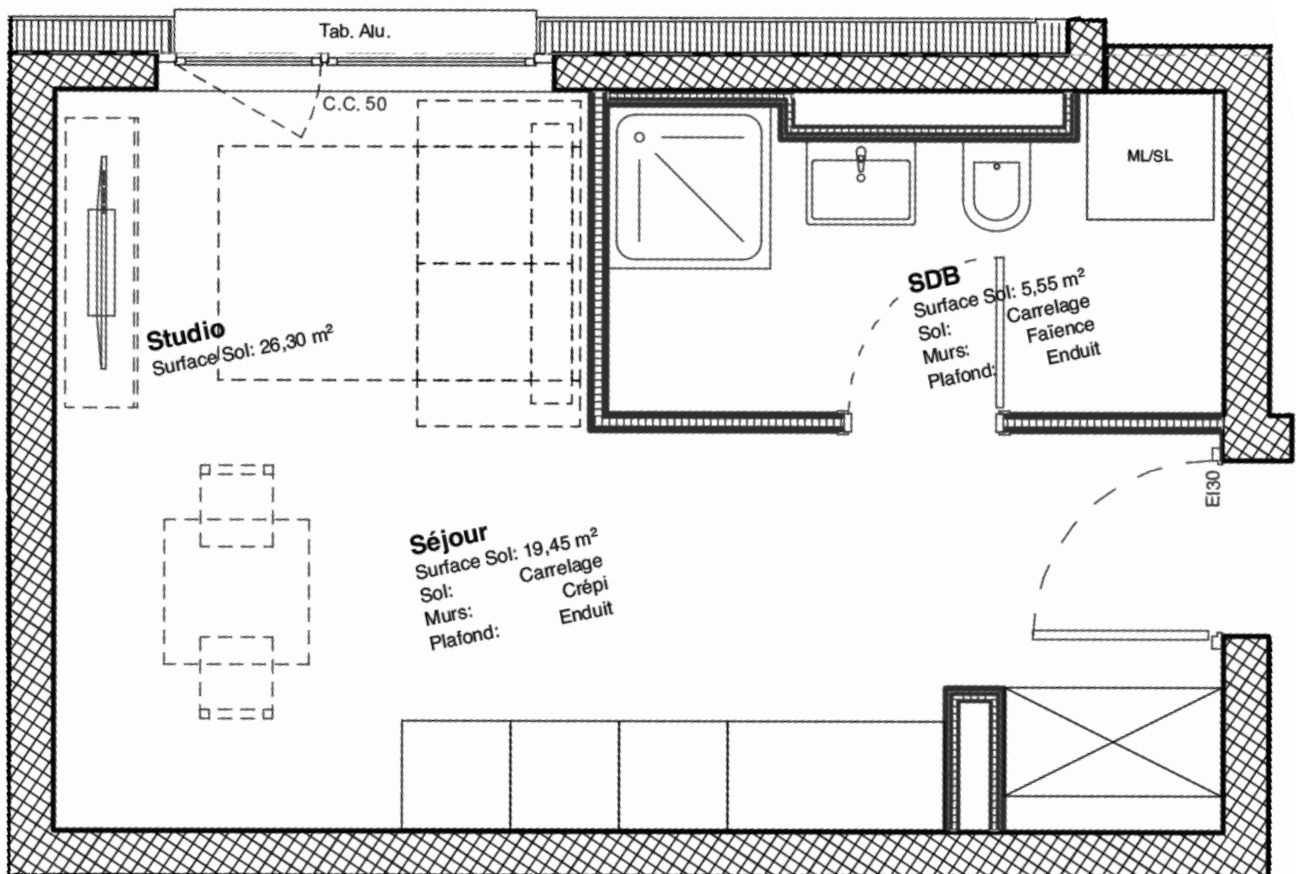
Balcon - terrasse : 0.00 m²

Surface pondérée : 28.90 m²

(SB + 1/2 balcon)



Localisation - 1er étage



APPARTEMENT A20

Nombre de pièces : 3.5 pièces

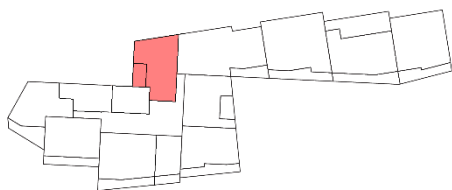
Surface nette : 61.50 m²

Surface brute : 73.80 m²

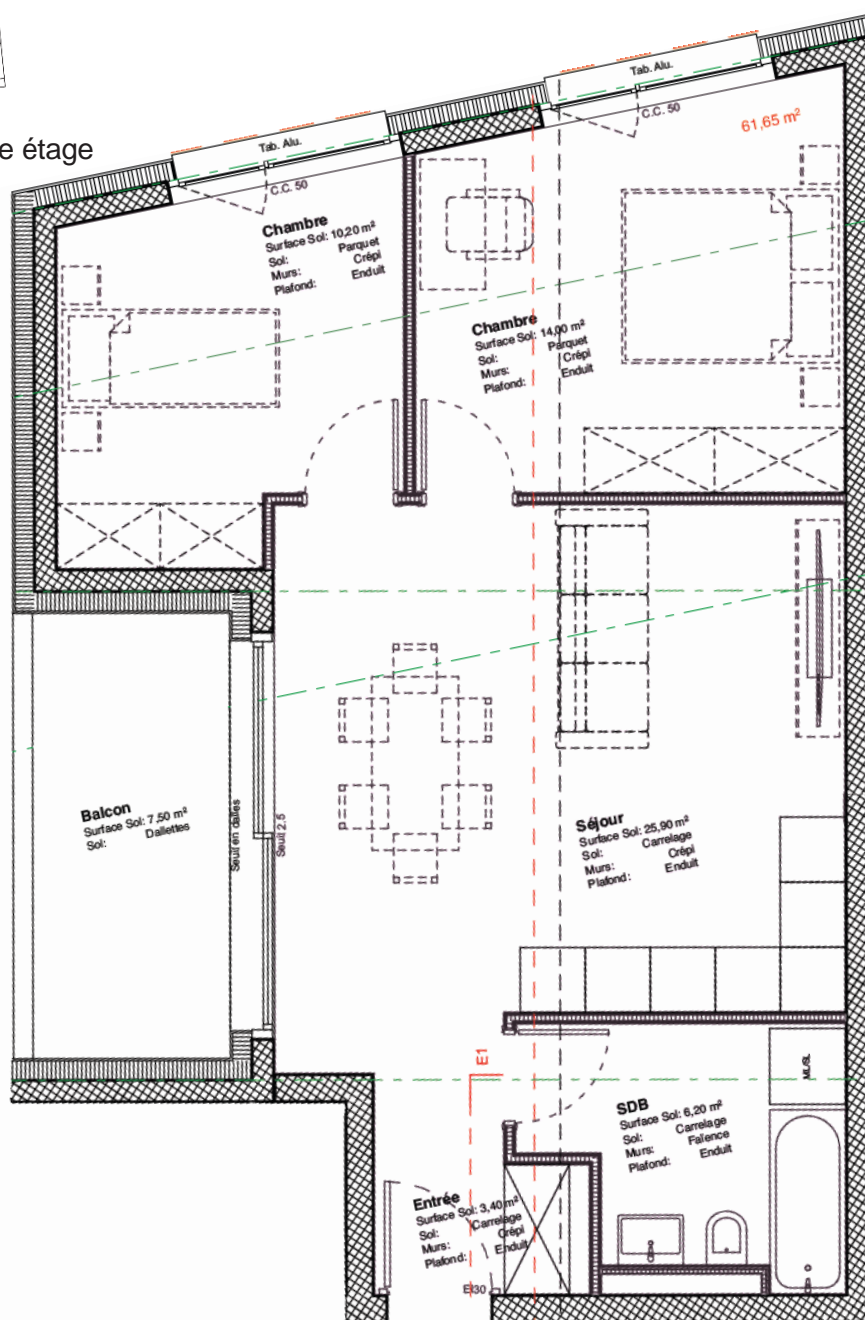
Balcon - terrasse : 7.50 m²

Surface pondérée : 77.55 m²

(SB + 1/2 Balcon)



Localisation - 2ème étage



0

5

APPARTEMENT A21

Nombre de pièces : 4.5 pièces

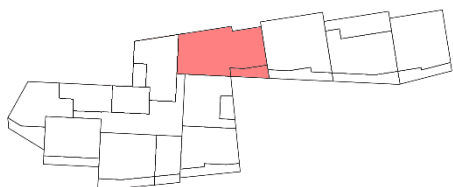
Surface nette : 106.55 m²

Surface brute : 127.85 m²

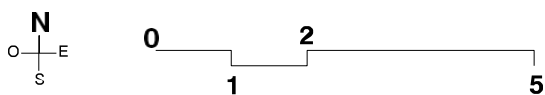
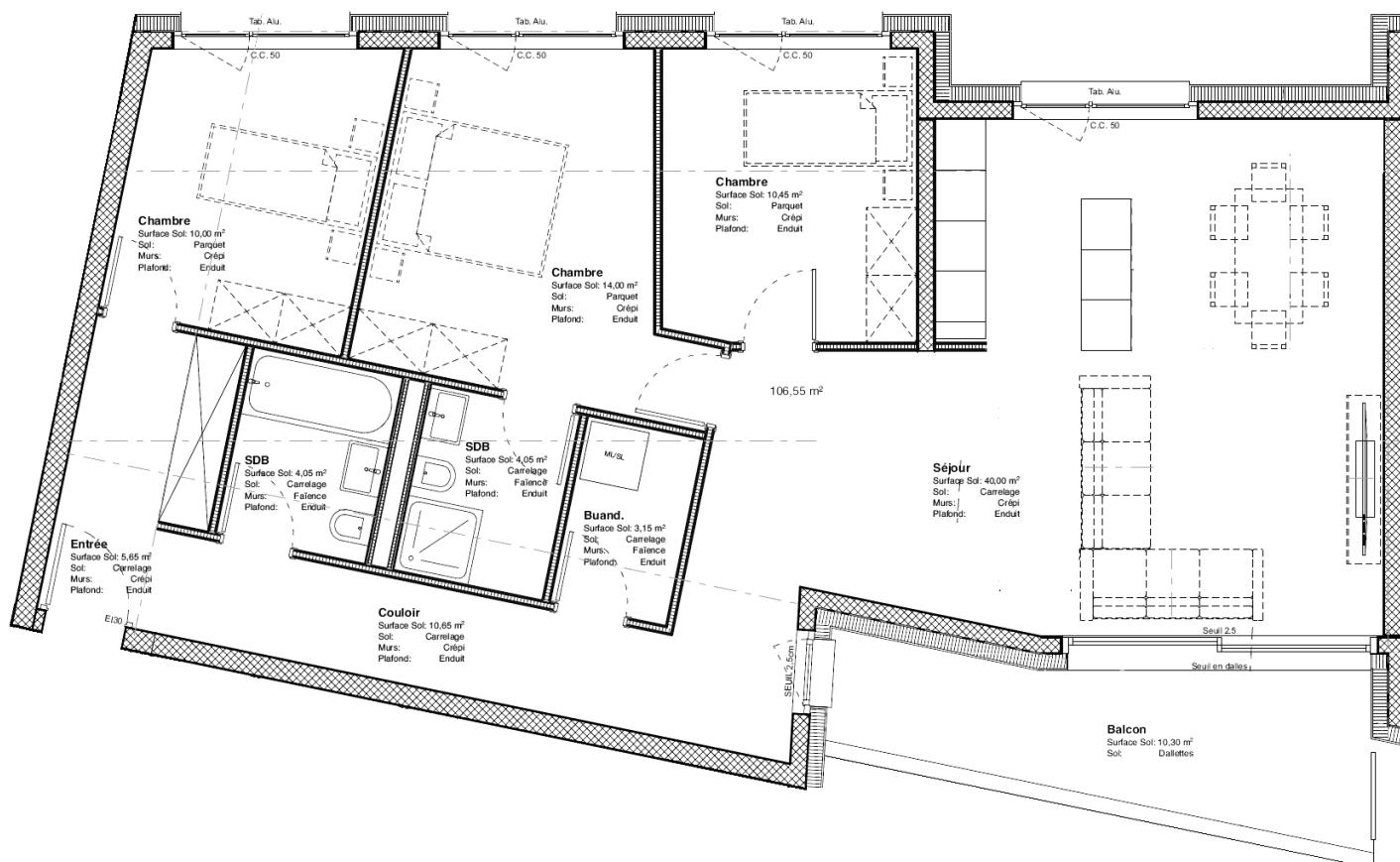
Balcon - terrasse : 10.30 m²

Surface pondérée : 133.00 m²

(SB + 1/2 balcon)



Localisation - 2ème étage



APPARTEMENT A22

Nombre de pièces : 2.5 pièces

Surface nette : 61.15 m²

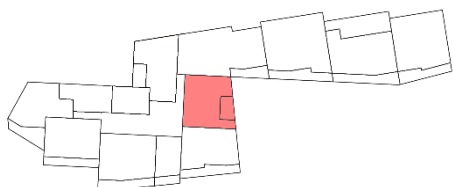
Surface brute : 67.20 m²

Balcon - terrasse : 8.20 m²

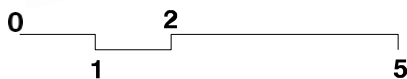
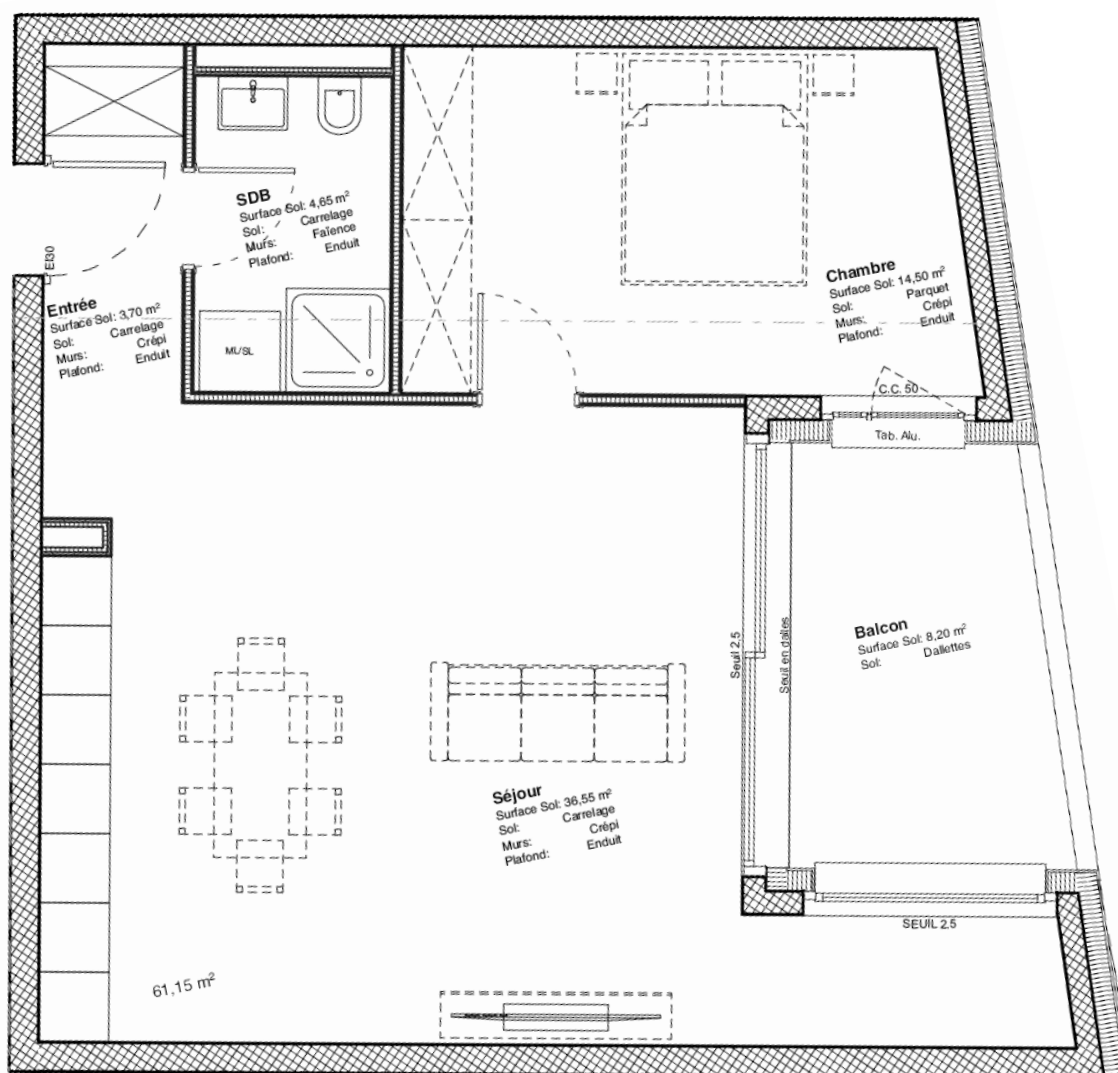
Surface pondérée : 71.30 m²

(SB + 1/2 balcon)

VENDU



Localisation - 2ème étage



APPARTEMENT A23

Nombre de pièces : 2.5 pièces

Surface nette : 59.55 m²

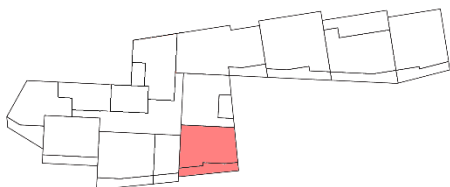
Surface brute : 66.50 m²

Balcon - terrasse : 14.60 m²

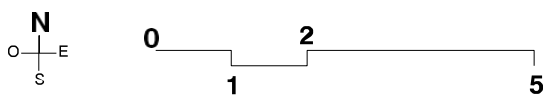
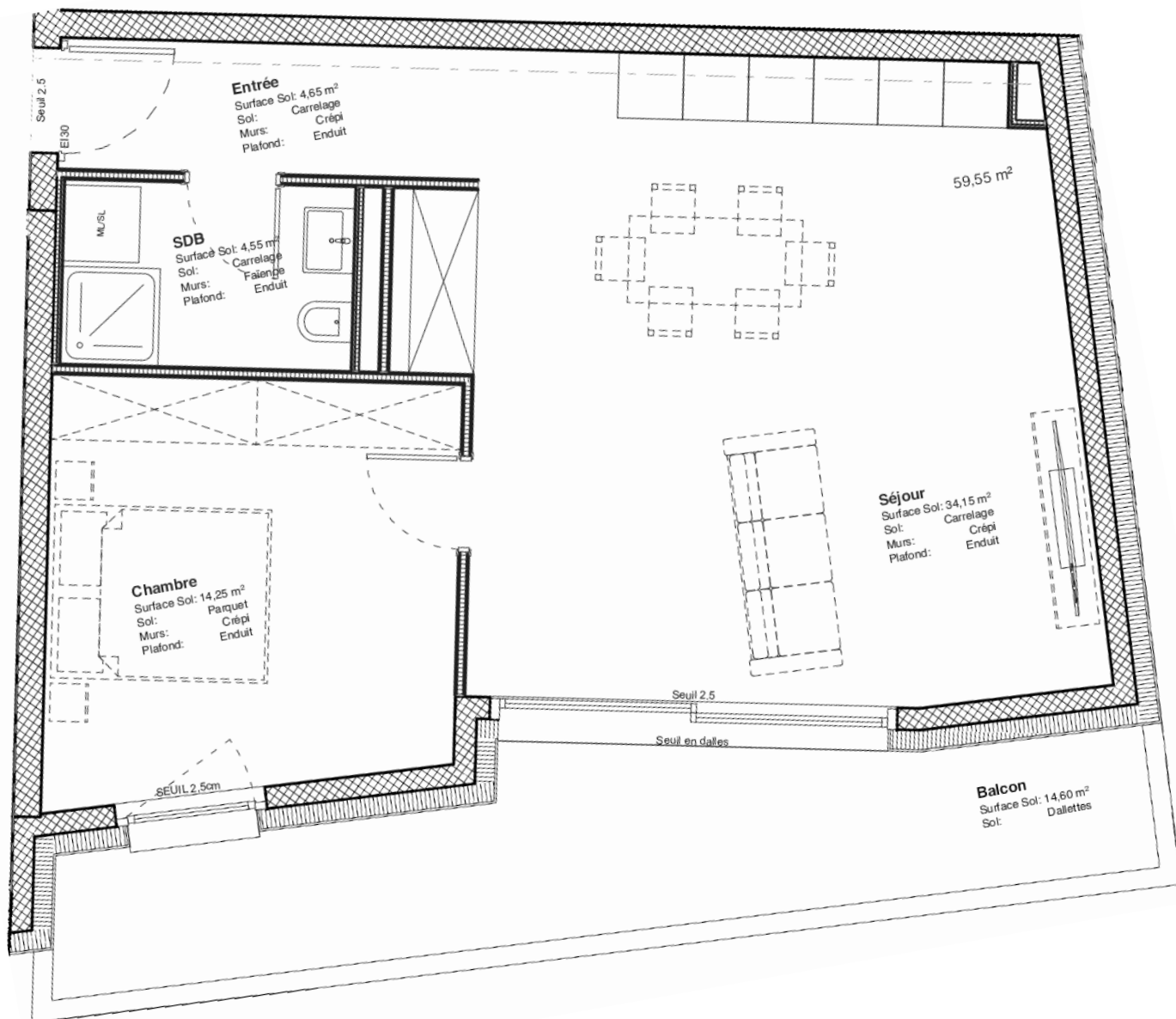
Surface pondérée : 73.80 m²

(SB + 1/2 balcon)

VENDU



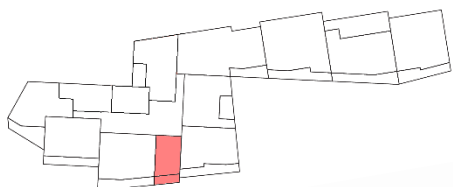
Localisation - 2ème étage



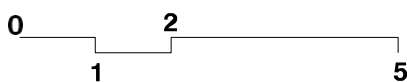
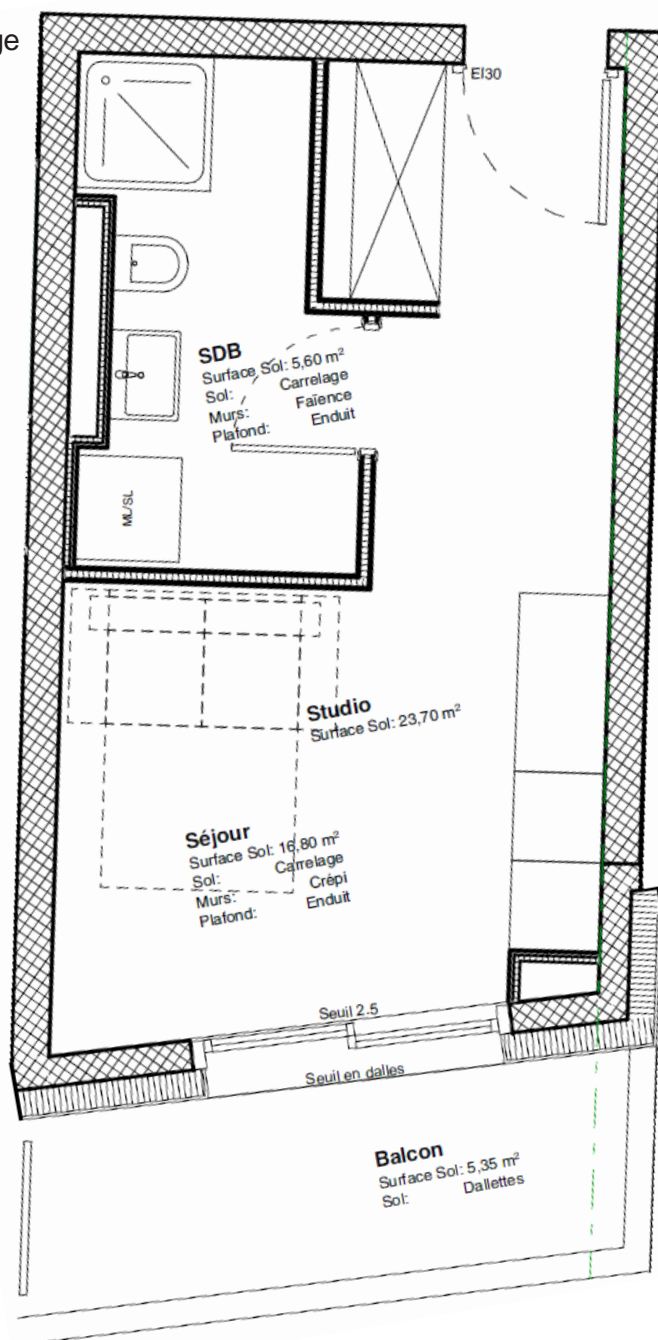
APPARTEMENT A24

Nombre de pièces : Studio
 Surface nette : 23.70 m²
 Surface brute : 26.05 m²
 Balcon - terrasse : 5.35 m²
 Surface pondérée : 28.70 m²

(SB + 1/2 balcon)



Localisation - 2ème étage



APPARTEMENT A25

Nombre de pièces : 3.5 pièces

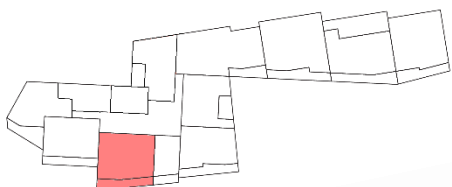
Surface nette : 77.00 m²

Surface brute : 84.70 m²

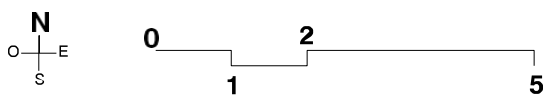
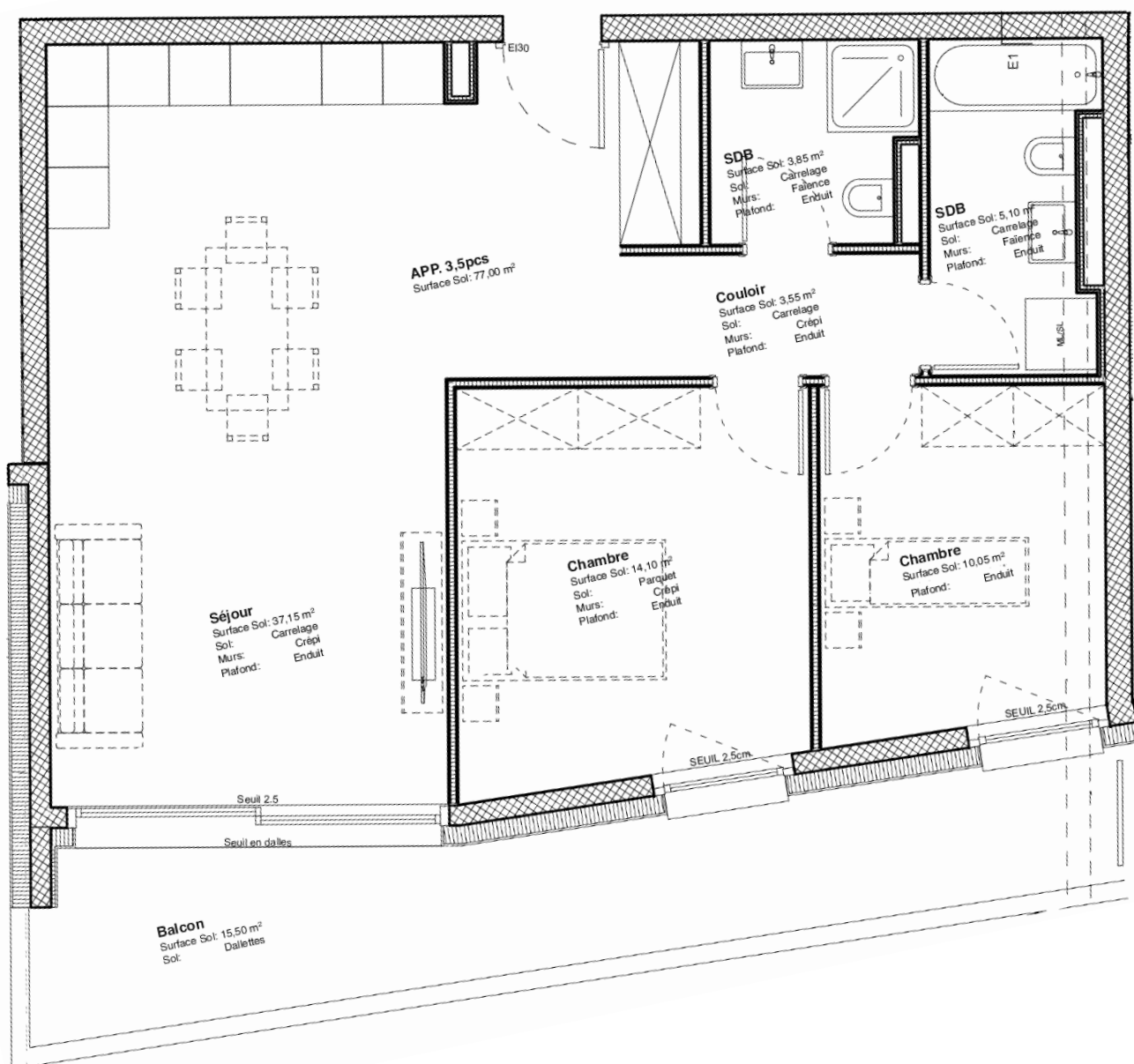
Balcon - terrasse : 15.50 m²

Surface pondérée : 92.45 m²

(SB + 1/2 balcon)



Localisation - 2ème étage



APPARTEMENT A26

Nombre de pièces : 2.5 pièces

Surface nette : 62.40 m²

Surface brute : 68.65 m²

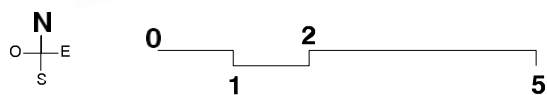
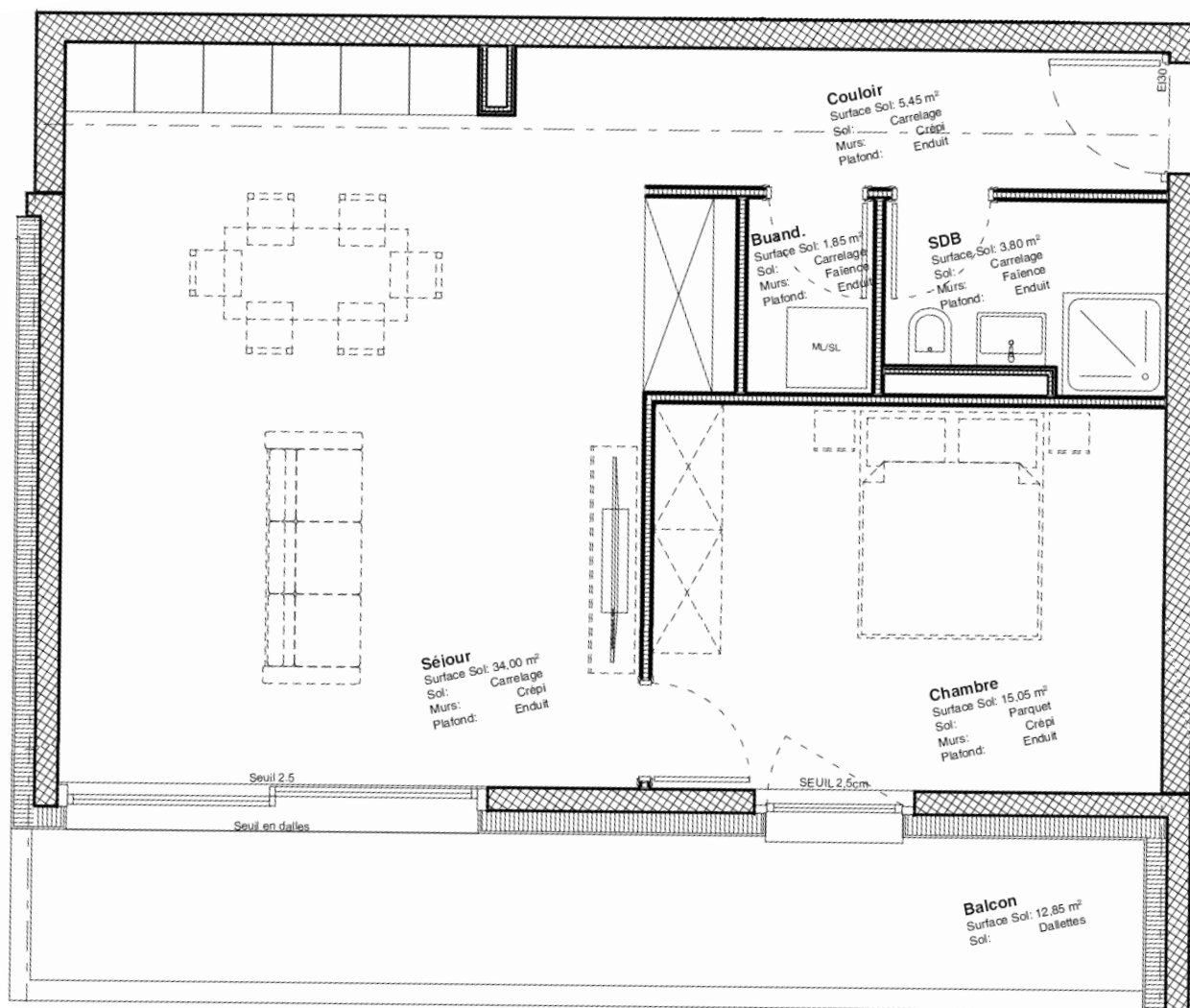
Balcon - terrasse : 12.85 m²

Surface pondérée : 75.05 m²

(SB + 1/2 balcon)



Localisation - 2ème étage



APPARTEMENT A27

Nombre de pièces : 2.5 pièces

Surface nette : 61.10 m²

Surface brute : 67.20.m²

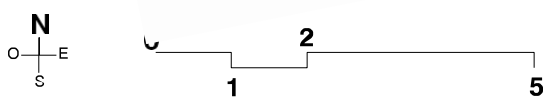
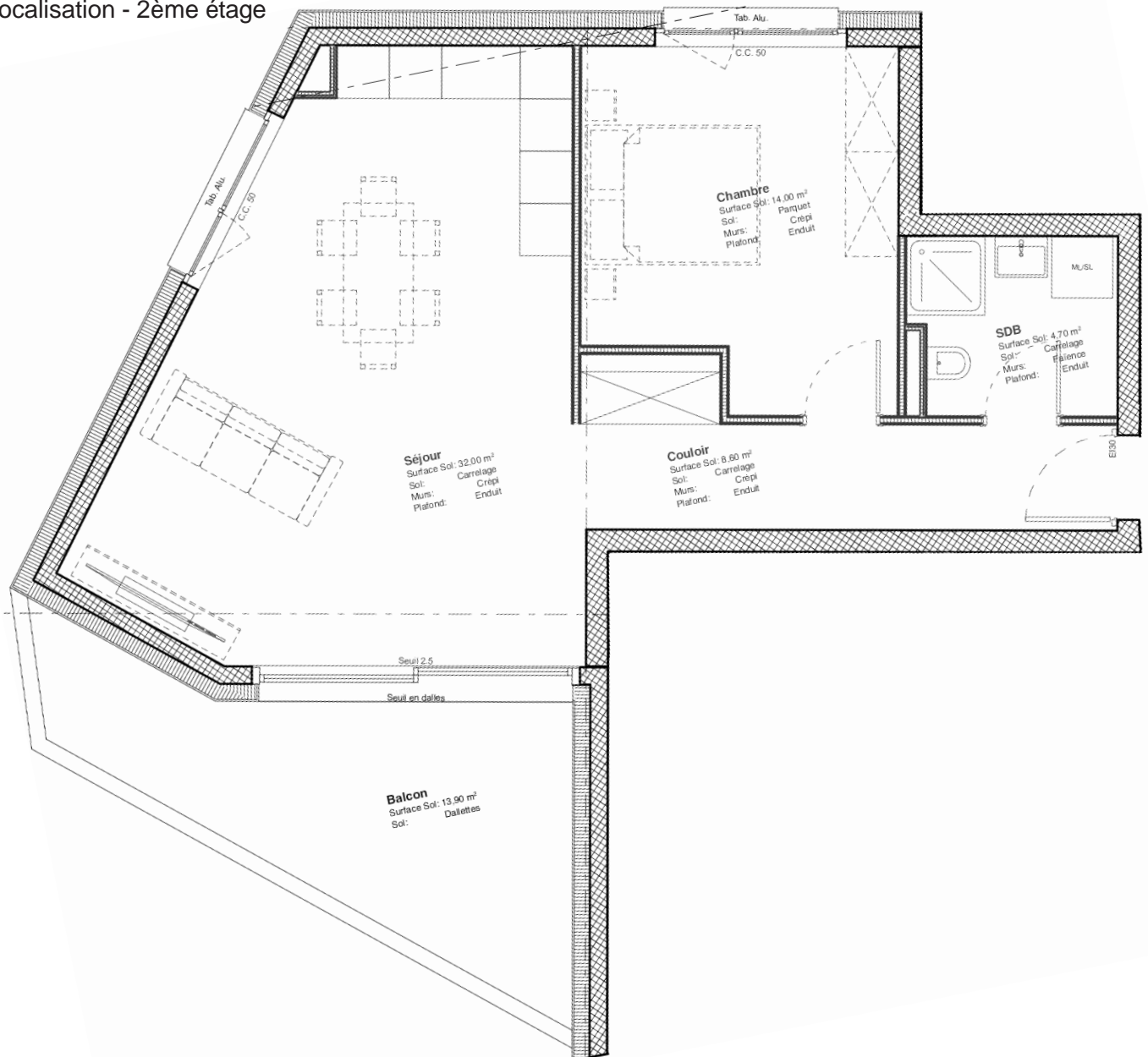
Balcon - terrasse : 13.90 m²

Surface pondérée : 74.15 m²

(SB + 1/2 balcon)



Localisation - 2ème étage



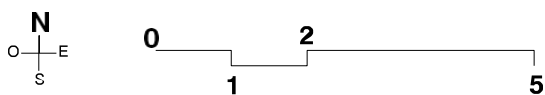
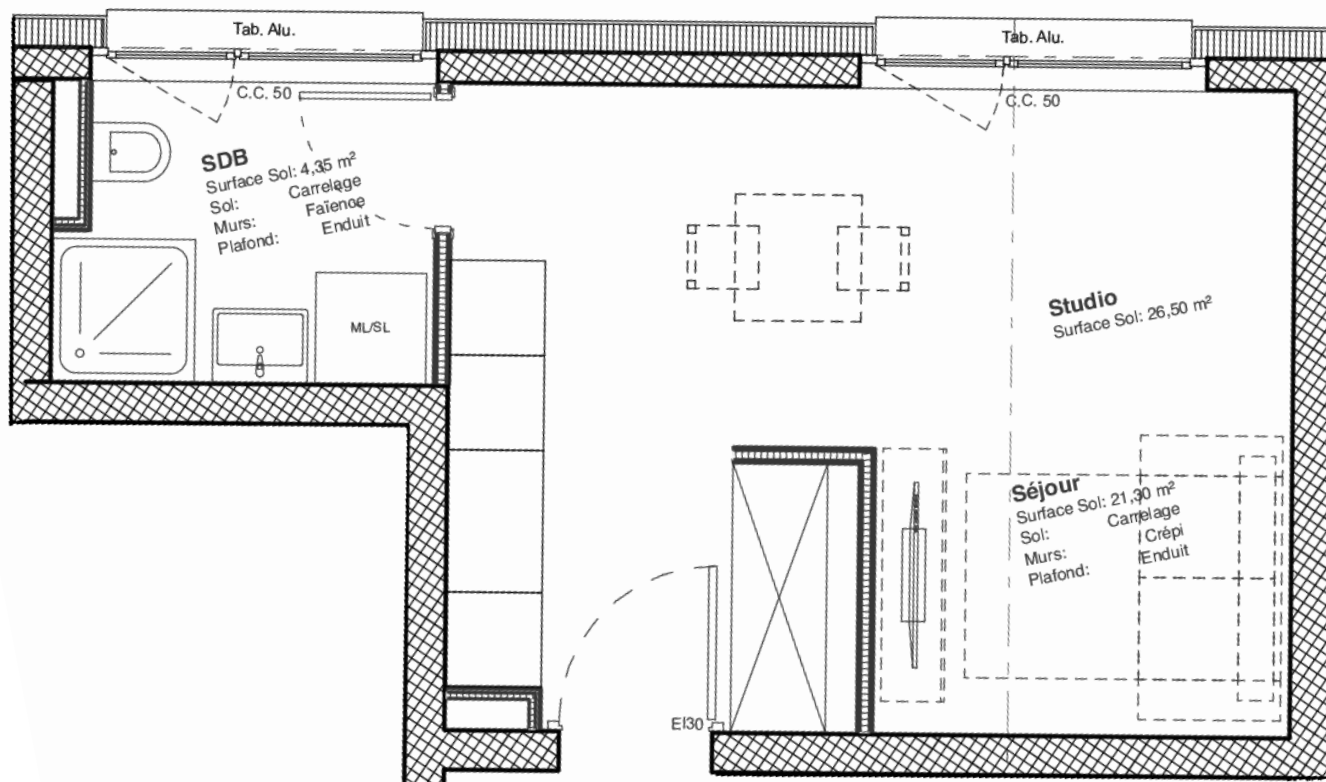
APPARTEMENT A28

Nombre de pièces : Studio
 Surface nette : 26.50 m²
 Surface brute : 29.15 m²
 Balcon - terrasse : 0.00 m²
 Surface pondérée : 29.15 m²

(SB + 1/2 balcon)



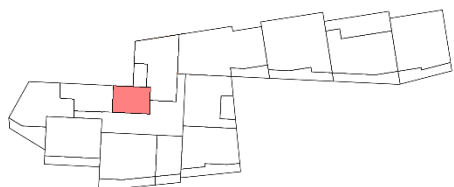
Localisation - 2ème étage



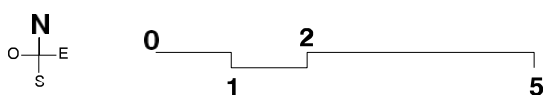
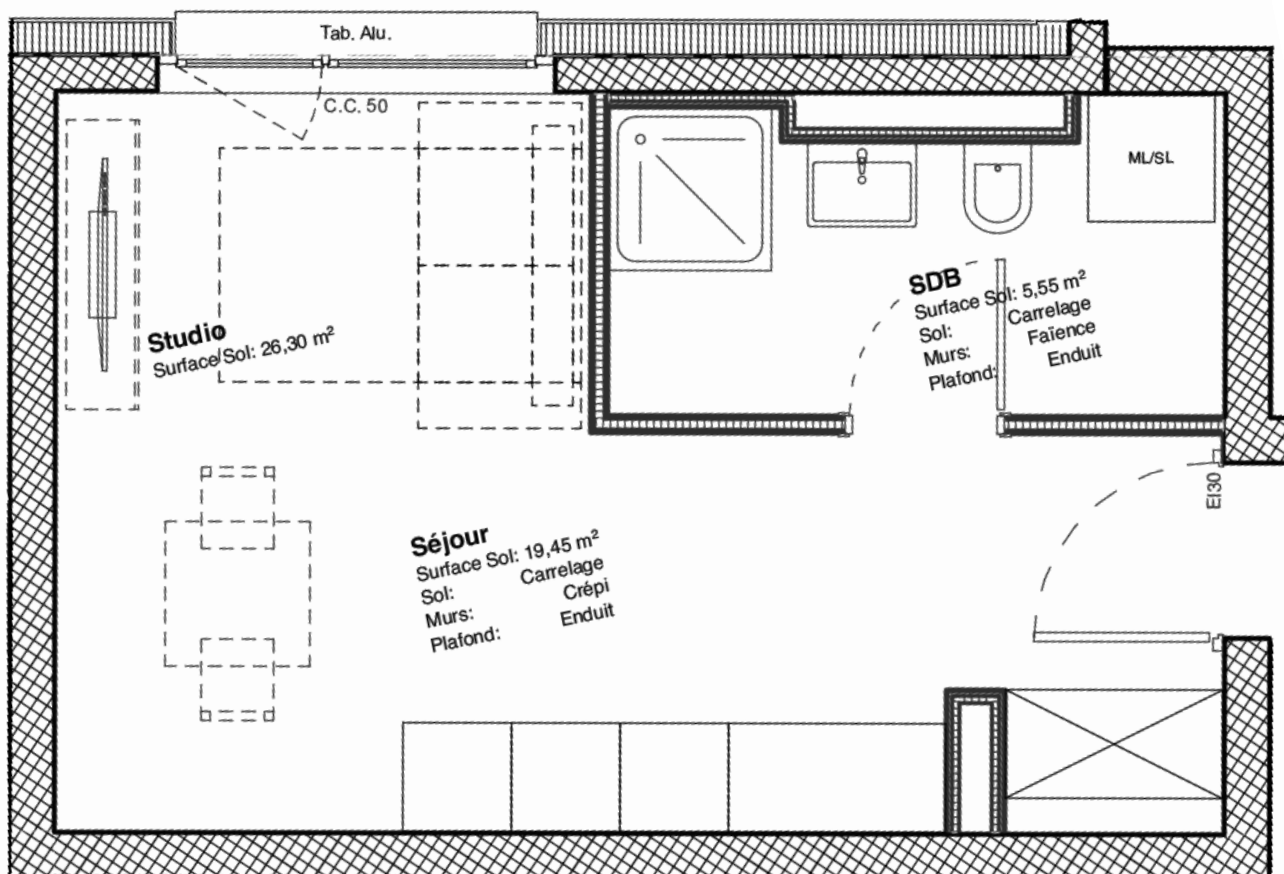
APPARTEMENT A29

Nombre de pièces : Studio
 Surface nette : 26.30 m²
 Surface brute : 28.90 m²
 Balcon - terrasse : 0.00 m²
 Surface pondérée : 28.90 m²

(SB + 1/2 balcon)



Localisation - 2ème étage



APPARTEMENT A30

Nombre de pièces : 3.5 pièces

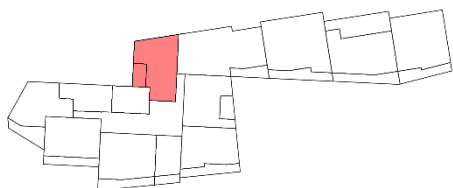
Surface nette : 61.50 m²

Surface brute : 73.80 m²

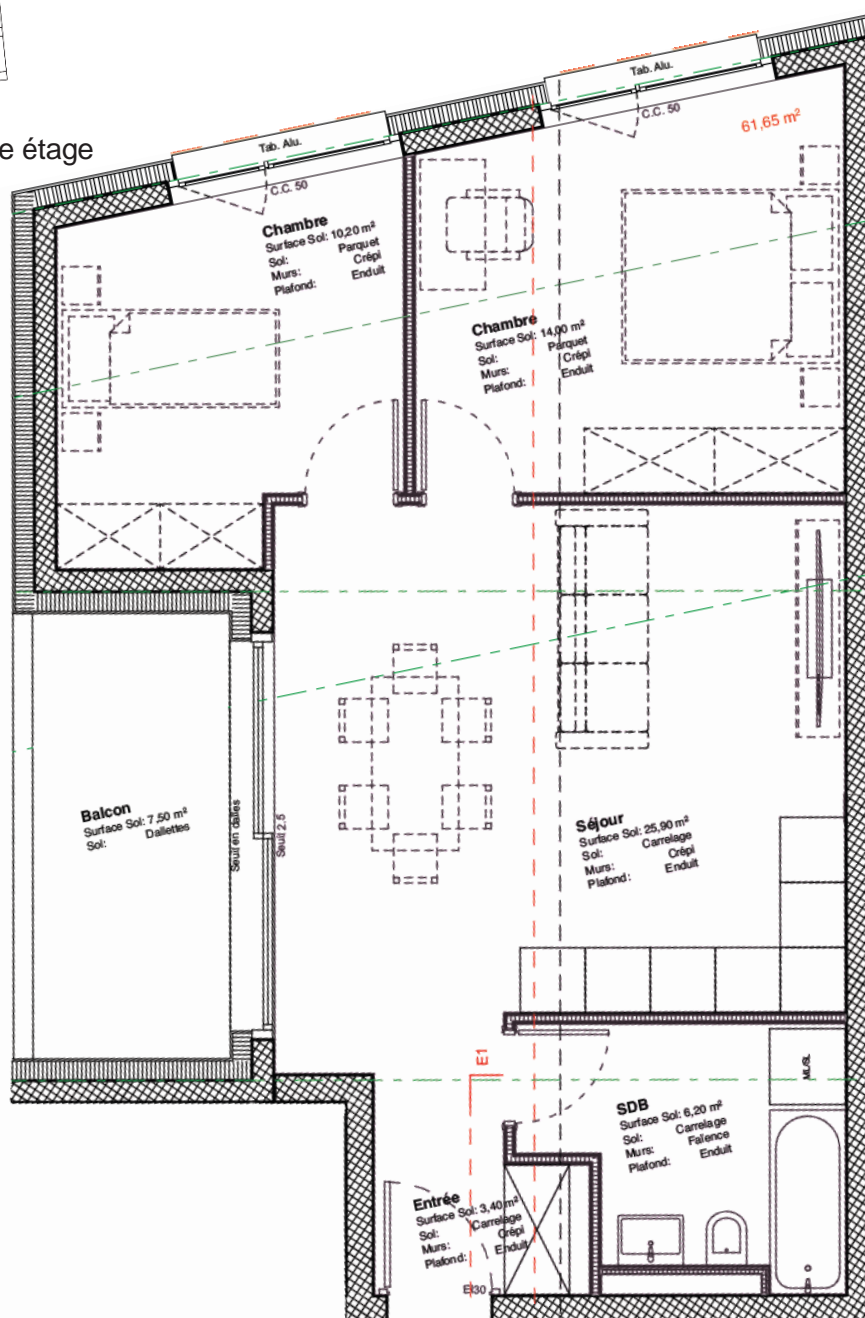
Balcon - terrasse : 7.50 m²

Surface pondérée : 77.55 m²

(SB + 1/2 Balcon)



Localisation - 3ème étage



APPARTEMENT A31

Nombre de pièces : 4.5 pièces

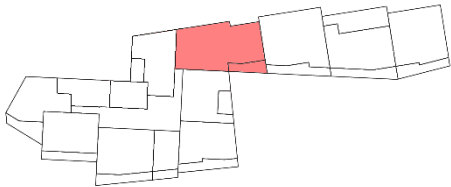
Surface nette : 106.55 m²

Surface brute : 127.85 m²

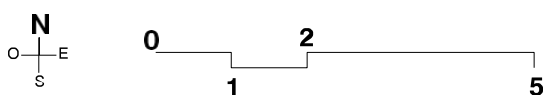
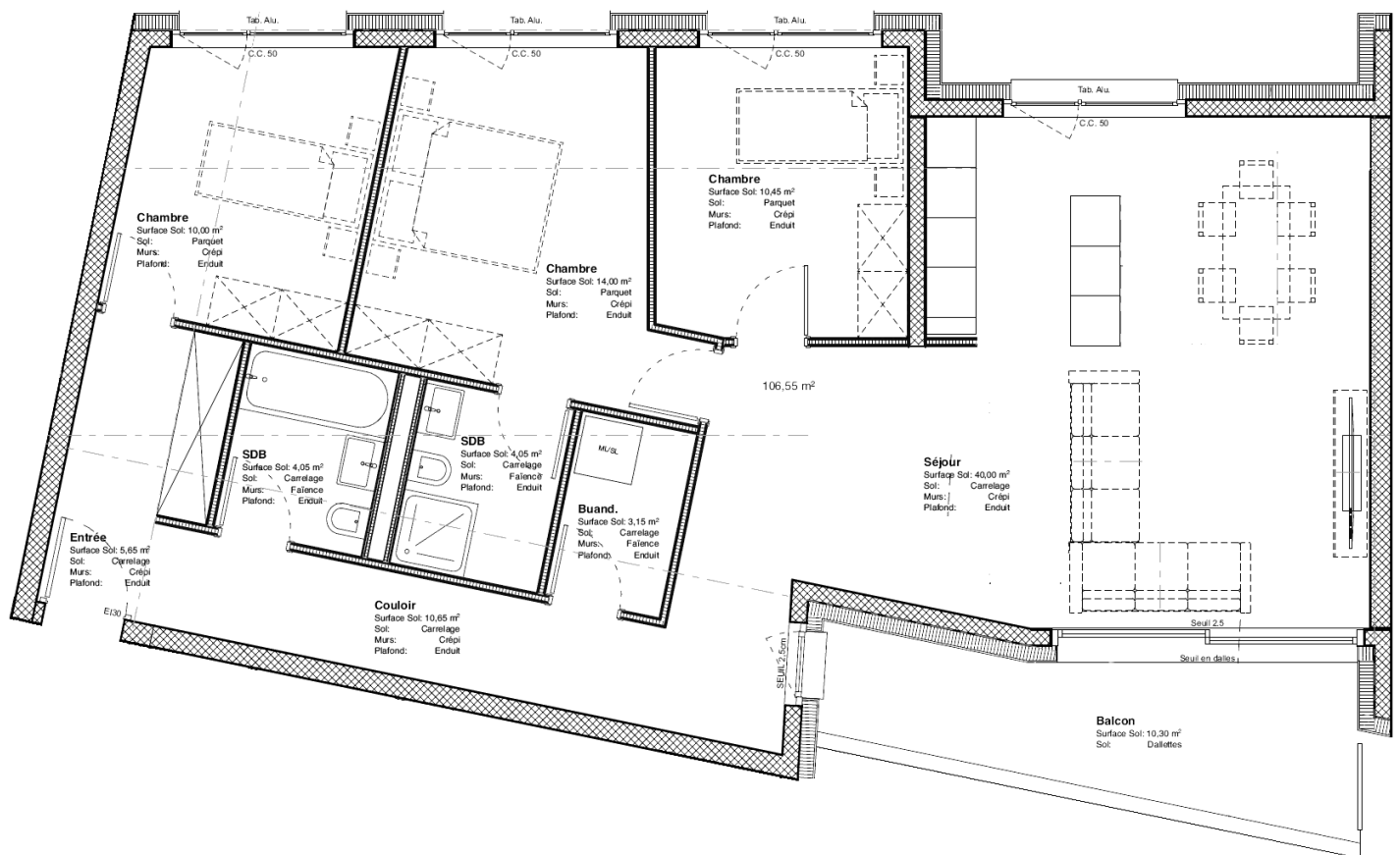
Balcon - terrasse : 10.30 m²

Surface pondérée : 133.00 m²

(SB + 1/2 balcon)



Localisation – 3ème étage



APPARTEMENT A32

Nombre de pièces : 2.5 pièces

Surface nette : 61.15 m²

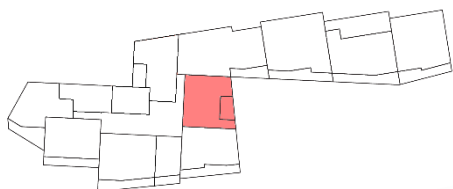
Surface brute : 67.20 m²

Balcon - terrasse : 8.20 m²

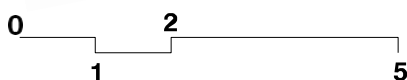
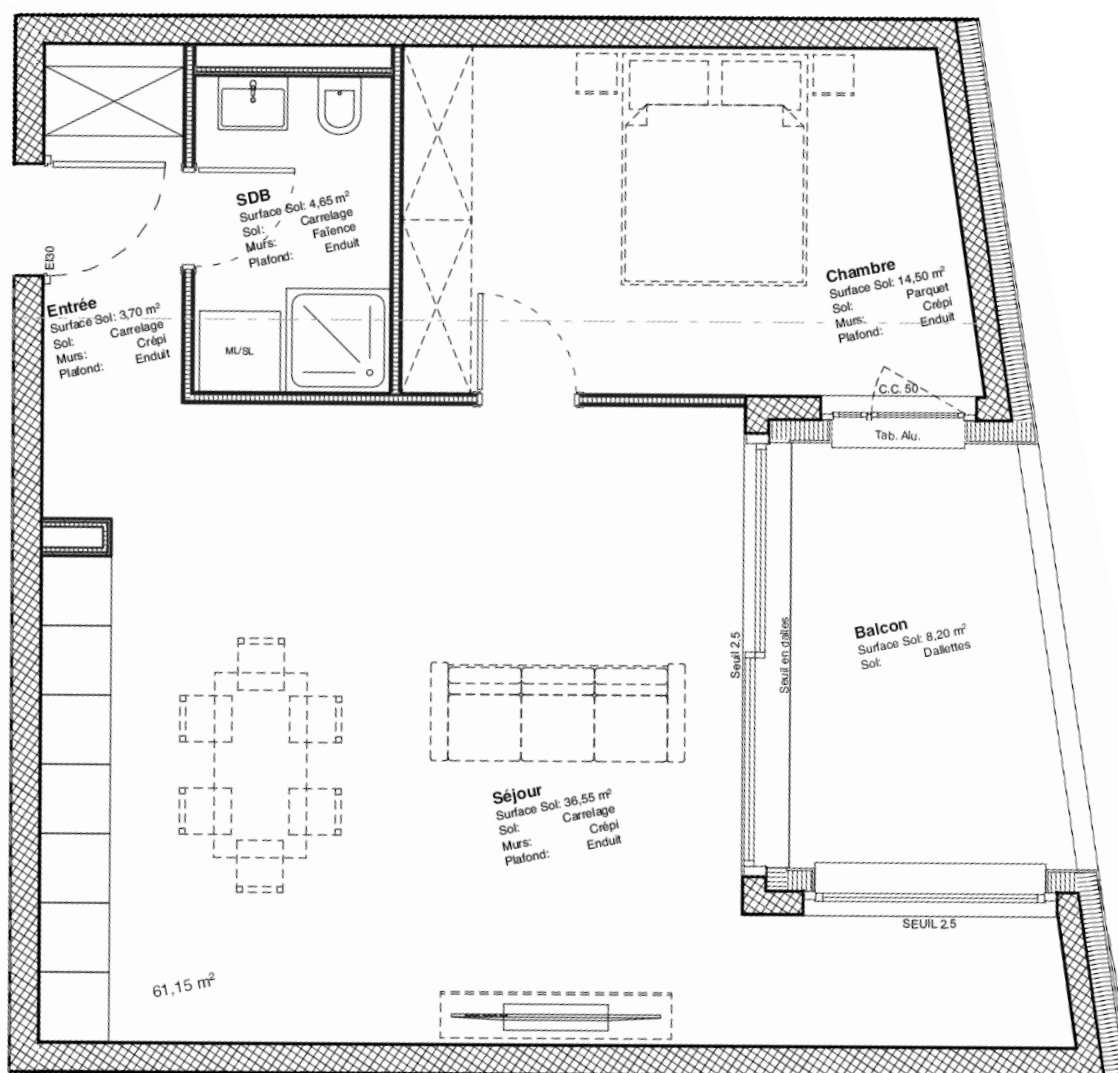
Surface pondérée : 71.30 m²

(SB + 1/2 balcon)

VENDU



Localisation – 3ème étage



APPARTEMENT A33

Nombre de pièces : 2.5 pièces

Surface nette : 59.55 m²

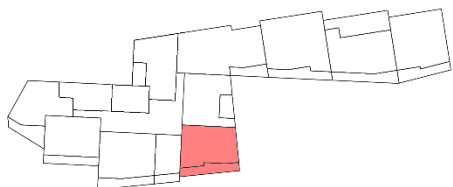
Surface brute : 66.50 m²

Balcon - terrasse : 14.60 m²

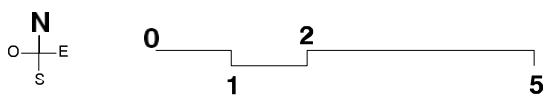
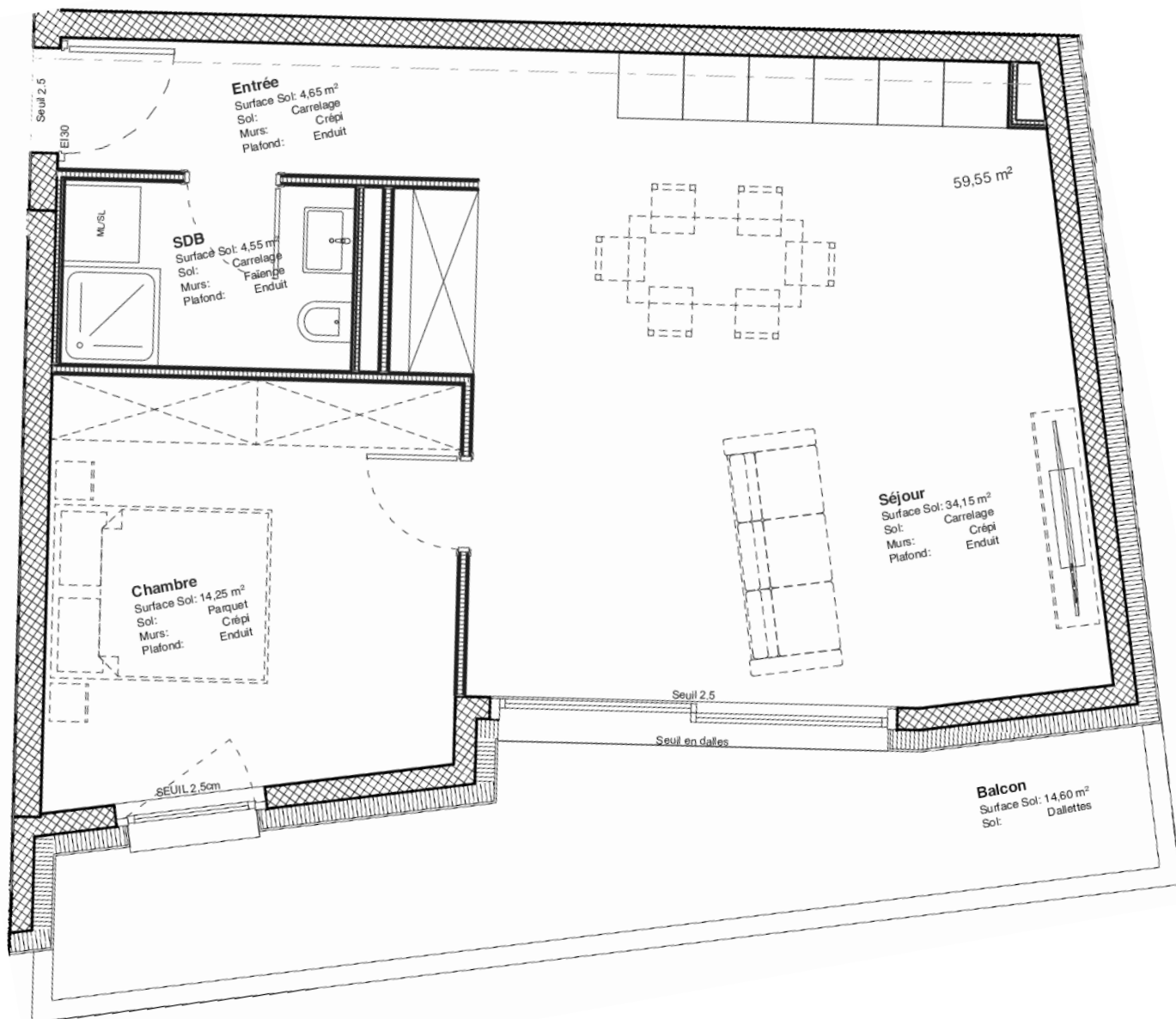
Surface pondérée : 73.80 m²

(SB + 1/2 balcon)

VENDU



Localisation – 3ème étage

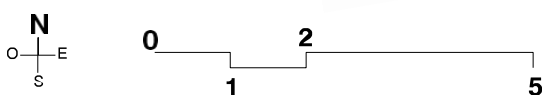
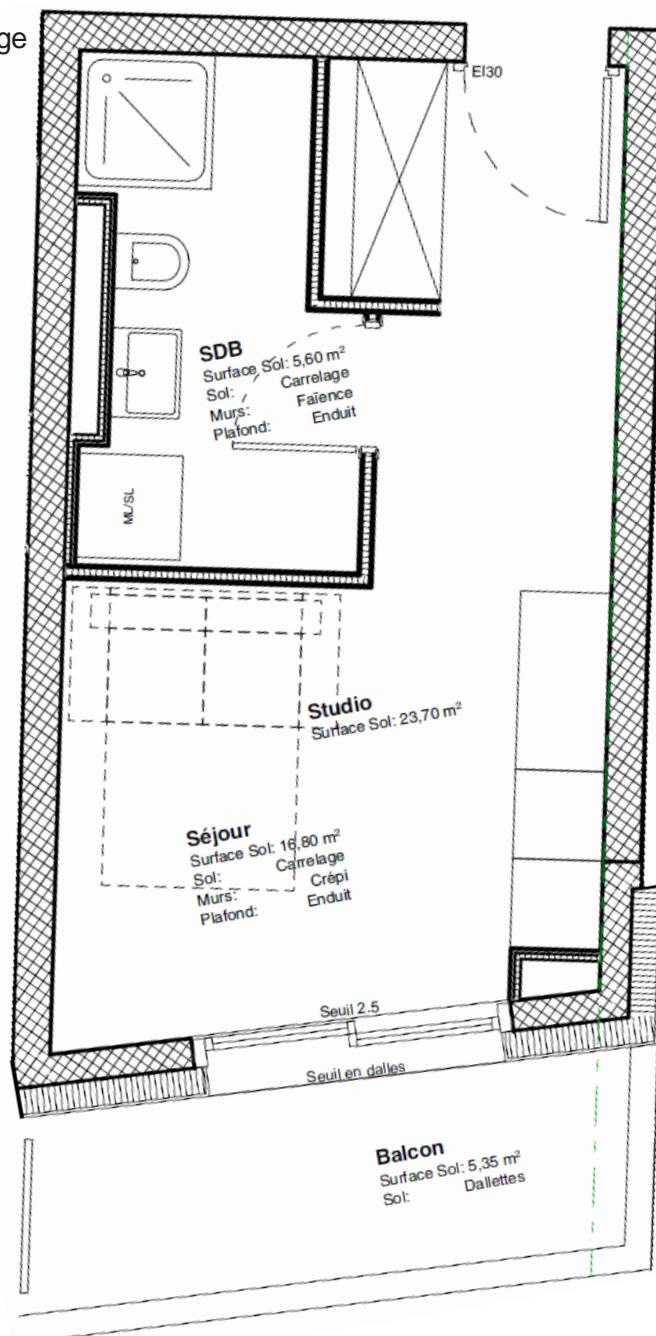


APPARTEMENT A34

Nombre de pièces : Studio
 Surface nette : 23.70 m²
 Surface brute : 26.05 m²
 Balcon - terrasse : 5.35 m²
 Surface pondérée : 28.70 m²
 (SB + 1/2 balcon)



Localisation – 3ème étage



APPARTEMENT A35

Nombre de pièces : 3.5 pièces

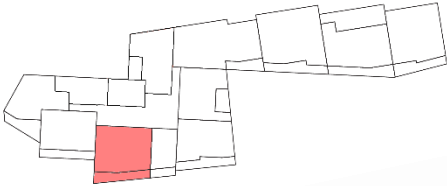
Surface nette : 77.00 m²

Surface brute : 84.70 m²

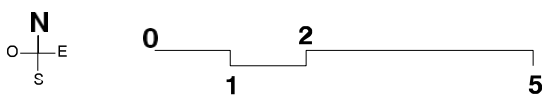
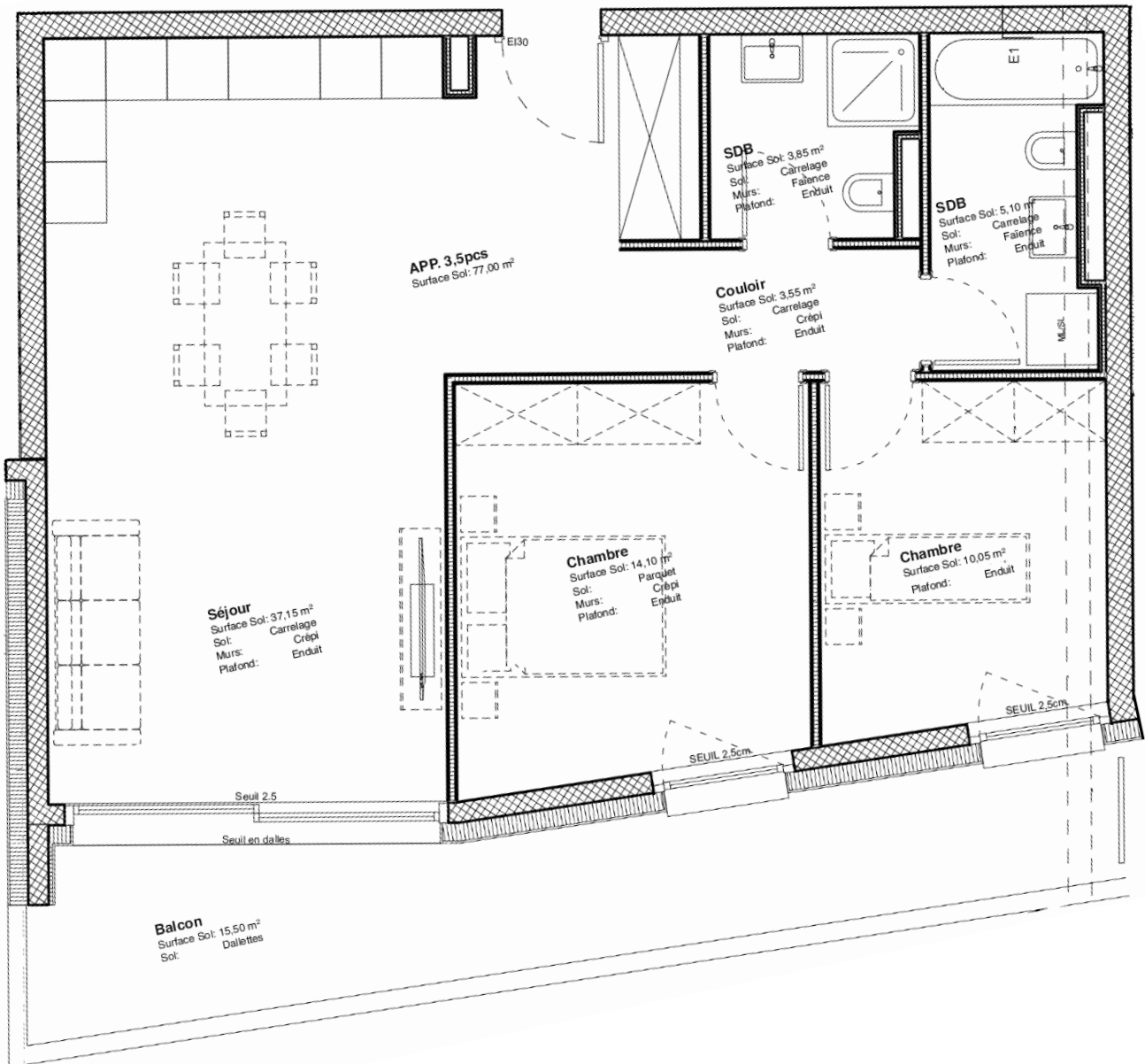
Balcon - terrasse : 15.50 m²

Surface pondérée : 92.45 m²

(SB + 1/2 balcon)



Localisation – 3ème étage



APPARTEMENT A36

Nombre de pièces : 2.5 pièces

Surface nette : 62.40 m²

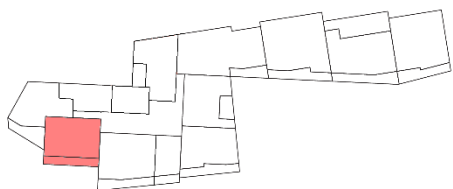
Surface brute : 68.65 m²

Balcon - terrasse : 12.85 m²

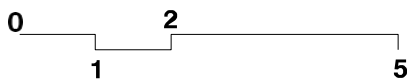
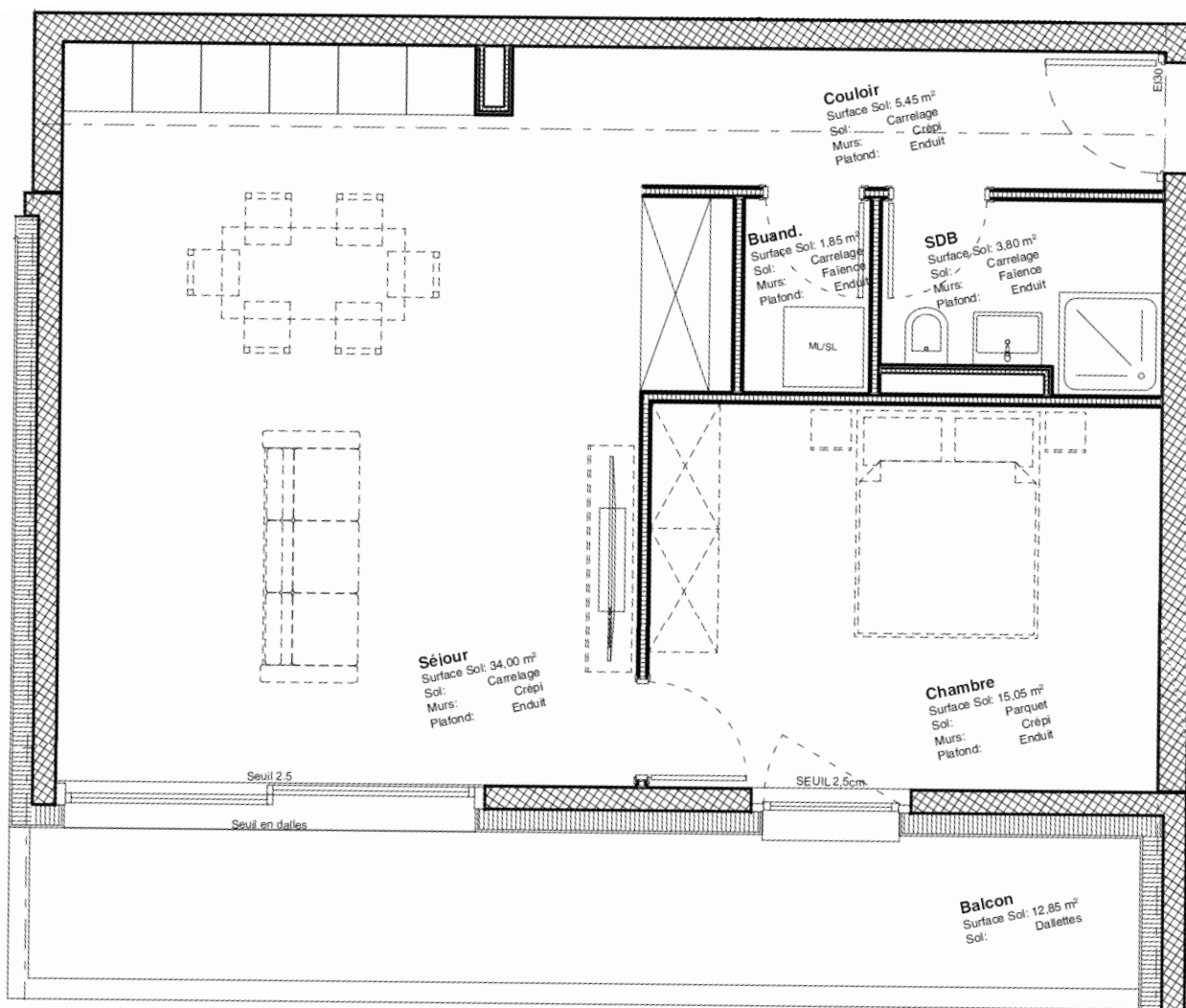
Surface pondérée : 75.05 m²

(SB + 1/2 balcon)

VENDU



Localisation – 3ème étage



APPARTEMENT A37

Nombre de pièces : 2.5 pièces

Surface nette : 61.10 m²

Surface brute : 67.20.m²

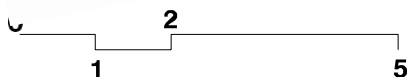
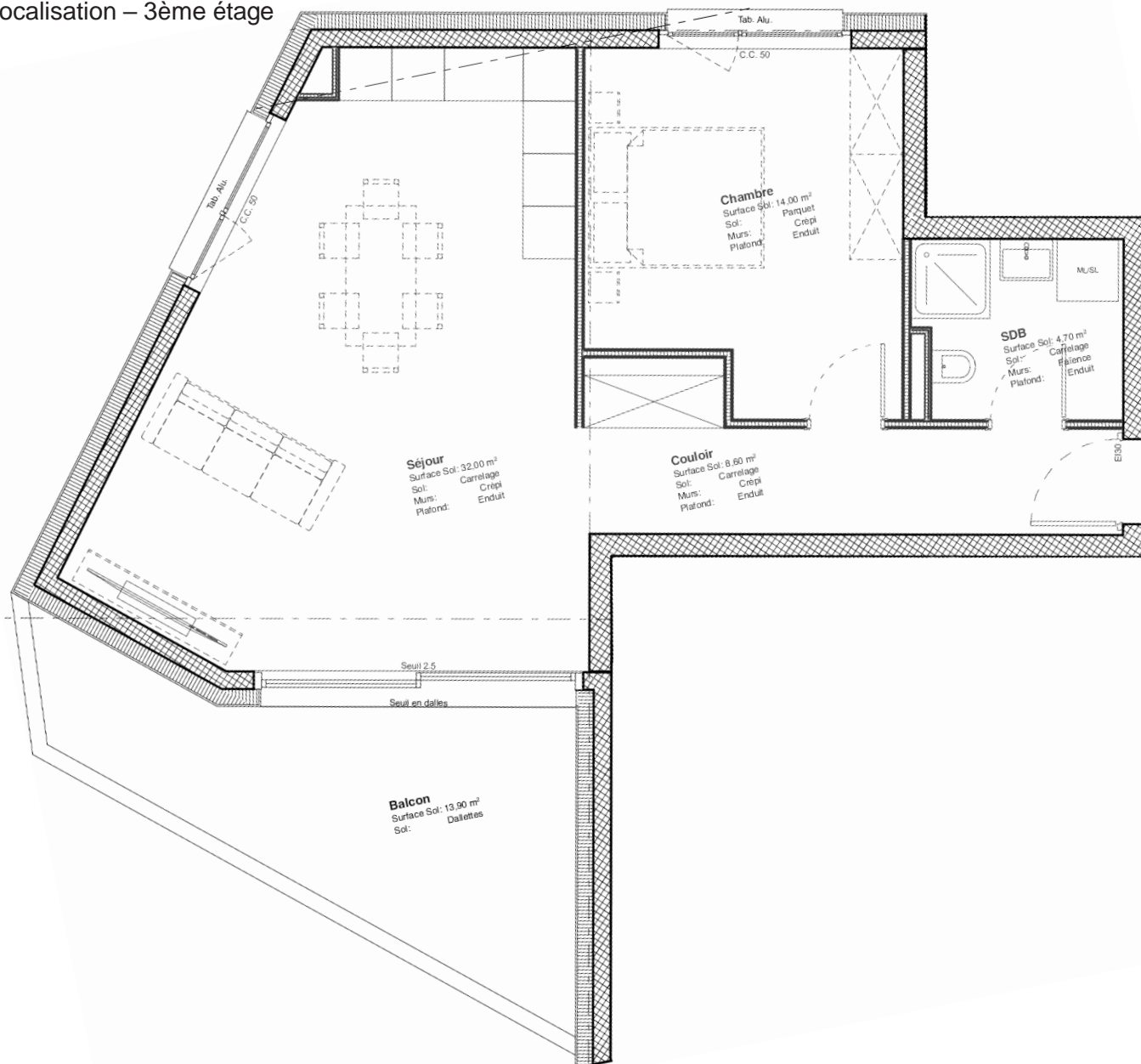
Balcon - terrasse : 13.90 m²

Surface pondérée : 74.15 m²

(SB + 1/2 balcon)



Localisation – 3ème étage



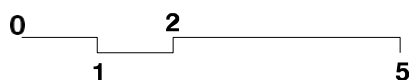
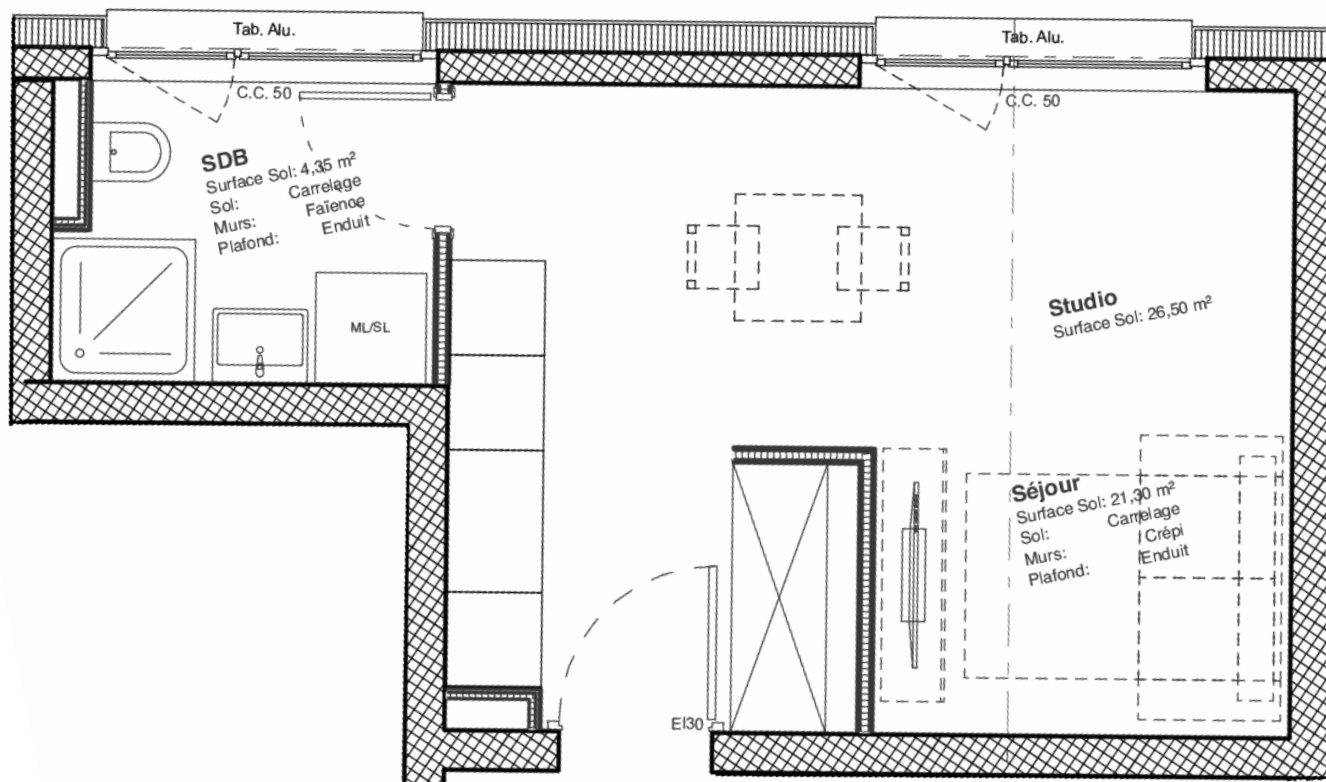
APPARTEMENT A38

Nombre de pièces : Studio
 Surface nette : 26.50 m²
 Surface brute : 29.15 m²
 Balcon - terrasse : 0.00 m²
 Surface pondérée : 29.15 m²

(SB + 1/2 balcon)



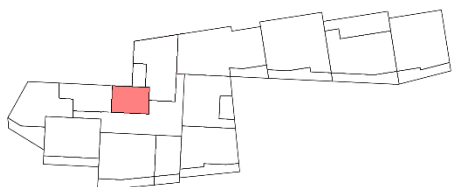
Localisation - 3ème étage



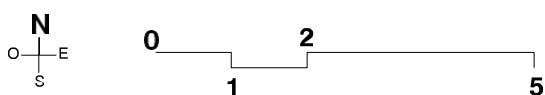
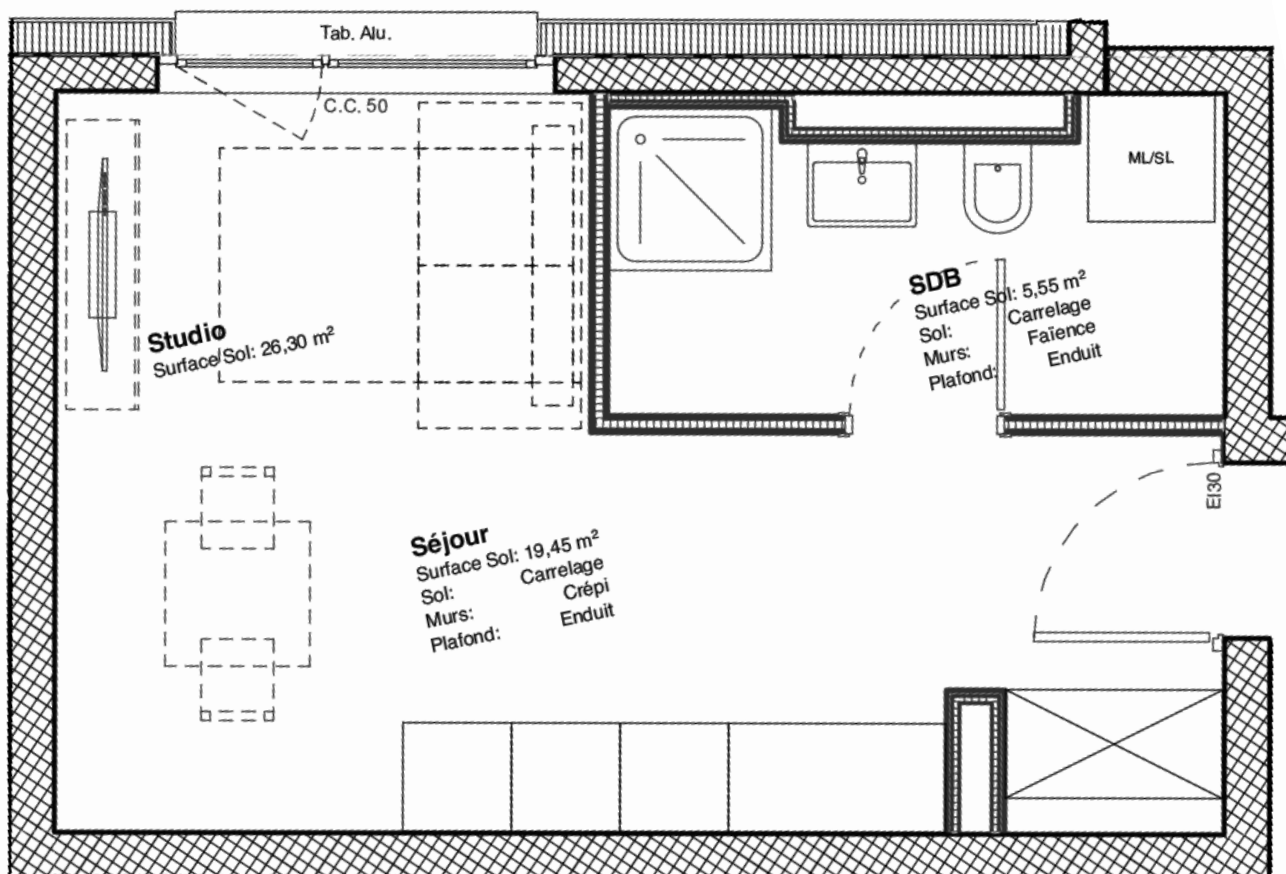
APPARTEMENT A39

Nombre de pièces : Studio
 Surface nette : 26.30 m²
 Surface brute : 28.90 m²
 Balcon - terrasse : 0.00 m²
 Surface pondérée : 28.90 m²

(SB + 1/2 balcon)



Localisation - 3ème étage



APPARTEMENT A41

Nombre de pièces : 4.5 pièces

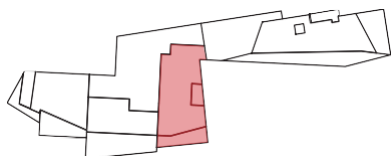
Surface nette : 129.60 m²

Surface brute : 149.50 m²

Balcon - terrasse : 9.70 m² - 24.60 m²

Surface pondérée : 162.55 m²

(SB + 1/2 balcon + 1/3 terrasse)



Localisation - 4ème étage



APPARTEMENT A42

Nombre de pièces : 3.5 pièces

Surface nette : 79.50 m²

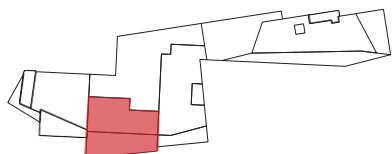
Surface brute : 90.00 m²

Balcon - terrasse : 63.15 m²

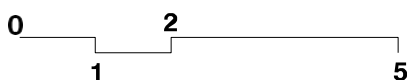
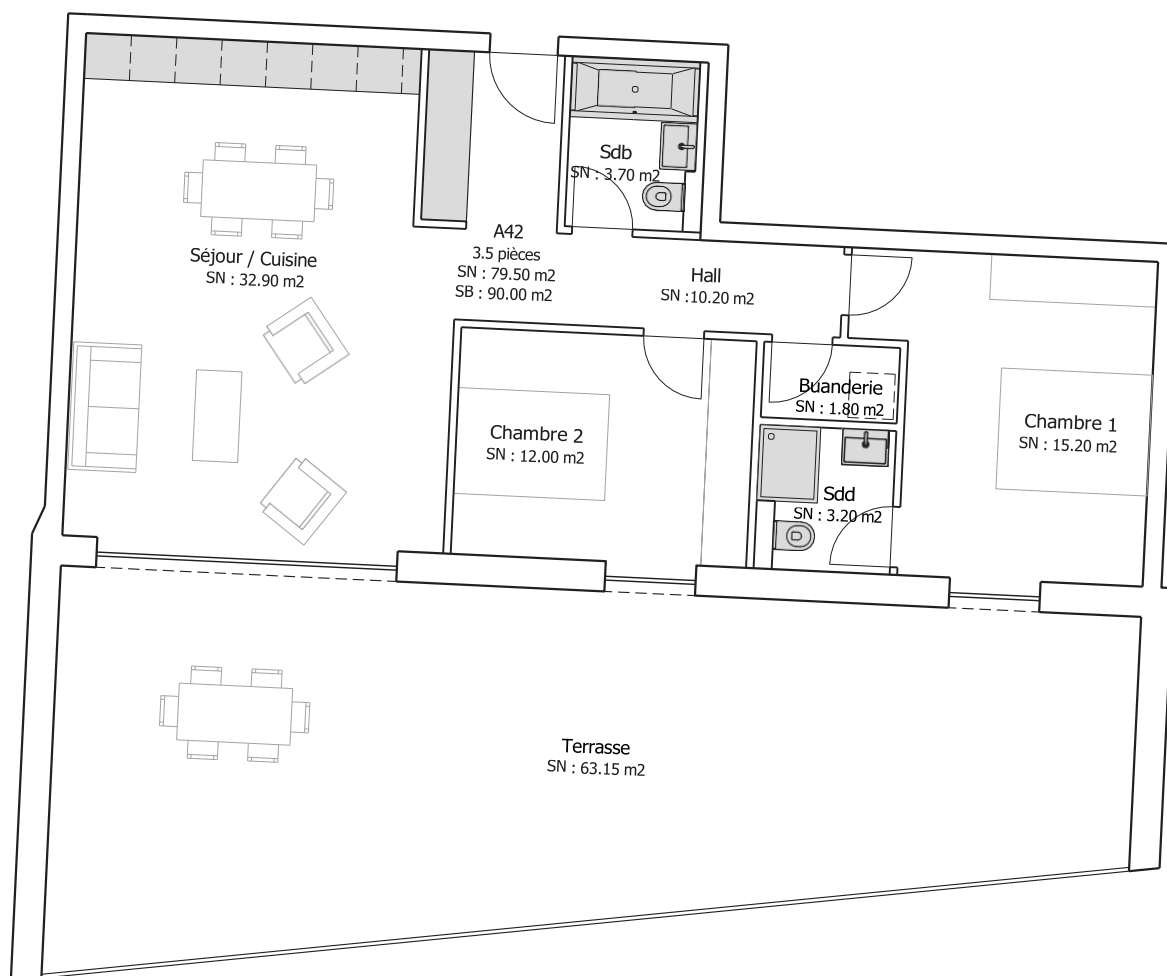
Surface pondérée : 111.05 m²

(SB + 1/3 terrasse)

VENDU



Localisation - 4ème étage



APPARTEMENT A43

Nombre de pièces : 4.5 pièces

Surface nette : 93.50 m²

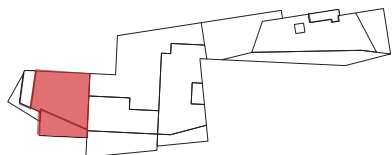
Surface brute : 108.00 m²

Balcon - terrasse : 33.00 m²

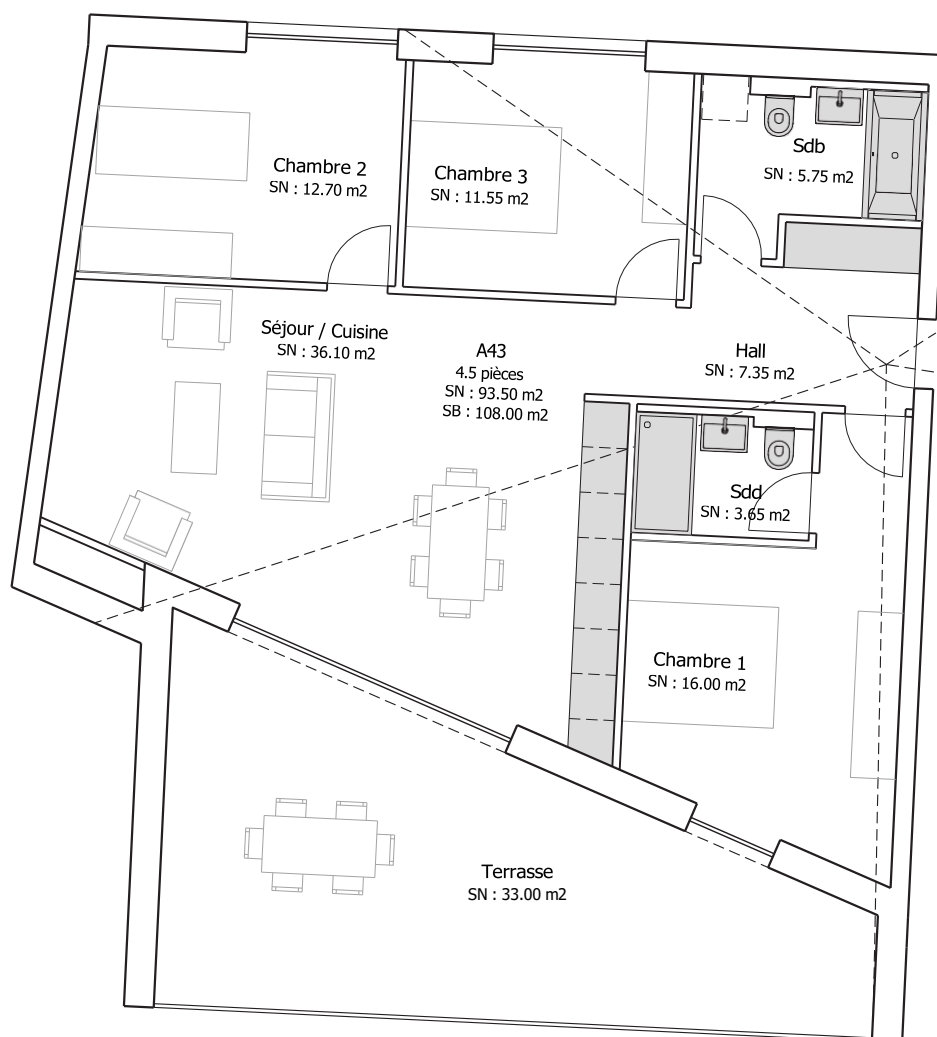
Surface pondérée : 119.00 m²

(SB + 1/3 terrasse)

VENDU



Localisation - 4ème étage



LISTE DE PRIX

Etage	N° lot	Type	Surface brutes				SB pondérée	Prix de vente
			Logement	Balcon 50%	Terrasse 33%	Jardin		
REZ								
	A01	2.5 pièces	64.35		30.6	63.75	74.45	450 000.00 CHF
	A02	Studio	26.05		12.7	20	30.25	235 000.00 CHF
	A03	3.5 pièces	84.7		34.15	27.6	95.95	610 000.00 CHF
	A04	2.5 pièces	68.65		29.6	30.3	78.4	450 000.00 CHF
1er								
	A10	3.5 pièces	67.65	8.8			71.4	495 000.00 CHF
	A11	4.5 pièces	117.15	10.3			122.3	635 000.00 CHF
	A12	2.5 pièces	67.2	8.2			71.3	415 000.00 CHF
	A13	2.5 pièces	66.5	14.6			73.8	430 000.00 CHF
	A14	Studio	26.05	5.35			28.7	220 000.00 CHF
	A15	3.5 pièces	84.7	15.5			92.45	595 000.00 CHF
	A16	2.5 pièces	68.65	12.85			75.05	430 000.00 CHF
	A17	2.5 pièces	67.2	13.9			74.15	430 000.00 CHF
	A18	Studio	29.15				29.15	220 000.00 CHF
	A19	Studio	28.9				28.9	220 000.00 CHF
2ème								
	A20	3.5 pièces	67.65	8.8			71.4	500 000.00 CHF
	A21	4.5 pièces	117.15	10.3			122.3	645 000.00 CHF
	A22	2.5 pièces	67.2	8.2			71.3	425 000.00 CHF
	A23	2.5 pièces	66.5	14.6			73.8	440 000.00 CHF
	A24	Studio	26.05	5.35			28.7	220 000.00 CHF
	A25	3.5 pièces	84.7	15.5			92.45	600 000.00 CHF
	A26	2.5 pièces	68.65	12.85			75.05	440 000.00 CHF
	A27	2.5 pièces	67.2	13.9			74.15	440 000.00 CHF
	A28	Studio	29.15				29.15	220 000.00 CHF
	A29	Studio	28.9				28.9	220 000.00 CHF
3ème								
	A30	3.5 pièces	67.65	8.8			71.4	510 000.00 CHF
	A31	4.5 pièces	117.15	10.3			122.3	655 000.00 CHF
	A32	2.5 pièces	67.2	8.2			71.3	435 000.00 CHF
	A33	2.5 pièces	66.5	14.6			73.8	450 000.00 CHF
	A34	Studio	26.05	5.35			28.7	235 000.00 CHF
	A35	3.5 pièces	84.7	15.5			92.45	605 000.00 CHF
	A36	2.5 pièces	68.65	12.85			75.05	450 000.00 CHF
	A37	2.5 pièces	67.2	13.9			74.15	450 000.00 CHF
	A38	Studio	29.15				29.15	225 000.00 CHF
	A39	Studio	28.9				28.9	225 000.00 CHF
Attique								
	A41	4.5 pièces	149.5	9.7	24.6		162.6	990 000.00 CHF
	A42	3.5 pièces	90		63.15		111.1	690 000.00 CHF
	A43	4.5 pièces	108		33		119	790 000.00 CHF